



Home

Gallotti&Radice

**The research
for perfection
is a constant
imperfect circle.**

**Obsessed with
materials,
dedicated
to research,
cut out for
innovation.
In an infinite circle.**

Gallotti&Radice

When craftsmanship, research and innovation interact harmoniously, a perfect circle is born. A real push towards the new is created, a continuous evolution of the concept of inhabiting space. A constant circle, a human and technological whole. Made of abstract forms and concrete ideas. Of pure materials and dirty hands. Of style and necessity.

A contemporary laboratory, where formal composure is contaminated by passion, and innovation is forged by the skilled hand of the craftsman. Outdo oneself and then start again. Each time with an extra knowledge and with a more sophisticated technology. Because design is not a destination. It is an attitude. A research. Perfect and imperfect at the same time.

This is us. An Italian company that has been bearing the name of our families for 60 years.
Gallotti & Radice.

Product index

Tables

Dolm

150, 158

Eyl

95, 97, 158

Haumea-T

35, 37, 81, 159

Koy

159

Layer

160

Maat

54, 56, 45, 160

Oroshi

145, 146, 148, 149, 160

Oto

16, 19, 161

Oto Big

14, 15, 161

Platium

75, 161

Platium Round

111, 112, 113, 162

Platium System

131, 132, 133, 162

Platium W

99, 162

YoI

163

Zen

163

Seatings

O414

41, 75, 94, 97, 111, 113, 130, 131, 164

Jackie

25, 34, 36, 103, 145, 148, 149, 164

Keyko

15, 45, 54, 56, 150, 151, 165

Lou

46, 47, 65, 80, 81, 118, 126, 127, 135, 139, 141, 142, 155, 165

Thea

16, 19, 79, 165

Thea Queen

80, 81, 166

Sofas and armchairs

O417

106, 107, 167

Audrey

7, 46, 47, 167

Audrey Poltrona

12, 168

Cloud

26, 27, 36, 37, 72, 93, 105, 168

Cloud Poltrona

39, 105, 109, 168

Cloud Pouf

39, 169

Fiona

87, 88, 89, 92, 93, 169

First

71, 170

First Modulare

68, 69, 76, 118, 126, 127, 141, 142, 170

First Poltrona

41, 68, 69, 125, 126, 127, 141, 142, 170

Sophie

134, 135, 137, 171

Twelve Day-Bed

20, 101, 117, 118, 126, 127, 171

Bed and bedside table

Xeni

100, 101, 172

Twelve C

100, 101, 172

Coffee tables

Basalto

173

Basalto 12

173

Chanel

46, 47, 68, 69, 174

Connection

76, 77, 174

Cookies

7, 11, 46, 47, 49, 174

Dama

80, 81, 126, 127, 135, 175

Fante

20, 21, 80, 81, 76, 101, 117, 118, 126, 127, 142, 175

Faraday

175

Fifties

176

Golden Moon

68, 69, 176

Gong

87, 88, 89, 105, 106, 109, 176

Haumea

88, 89, 40, 41, 105, 118, 177

Nori

26, 27, 28, 177

Nox

177

Oto Mini

138, 178

Sir T32

Sir T32 C
68, 69, 178

Tetris

26, 27, 28, 68, 69, 70, 71, 126, 127, 178

Twelve

39, 88, 89, 93, 118, 126, 127, 143, 135, 141, 179

Zen

87, 88, 89, 92, 179

Lightings

Bolle

20, 94, 105, 141, 142, 180

Bolle Sola

16, 25, 34, 35, 36, 37, 76, 180

Bolle Tavolo 1

67, 68, 69, 72, 106, 109, 121, 181

Bolle Tavolo 3

78, 79, 110, 111, 113, 181

Bolle Tela

7, 8, 9, 181

Bolle Terra

101, 103, 182

Diantha

54, 116, 117, 130, 131, 182

Diantha Terra

182

Epsilon

15, 65, 75, 126, 127, 150, 151, 152, 183

Epsilon Sola

111, 113, 114, 115, 126, 127, 183

Eris

87, 88, 89, 90, 105, 183

Lanterna

13, 15, 184

Narghilè

145, 146, 147, 149, 184

Ori

60, 62, 63, 101, 184

Trolleys

Mister

185

Riki

16, 53, 84, 97, 185

Mirrors

Black&White Beat

53, 186

Changes O9

186

Chloé

65, 187

Cubista

50, 51, 187

Dream

187

Flabello

13, 57, 58, 188

Gemma

85, 188

Keplero

188

Leaf

189

Lebel 10

189

Niagara

36, 37, 190

Odette

19, 190

Selene Mirror

154, 155, 190

Soft

177, 191

Sole

7, 39, 191

Spring

191

Zed

192

Zeiss Mirror

118, 192

Consoles

Dolm Console

193

Tama Console

25, 37, 193

Vanities and desks

Grace

194

Selene

65, 154, 155, 194

Soho

195

Tama Secrétaire

102, 103, 195

Venere

139, 195

Zen

122, 123, 196

Storage units

Air Unit

16, 197

Air Up

79, 197

Athus

7, 12, 13, 15, 98, 99, 110, 111, 113, 198

Diedro

54, 55, 57, 198

Misty Venice

60, 61, 199

Misty Venice Bar

136, 137, 199

Pandora

32, 33, 146, 149, 150, 151, 199

Pandora Craquelé

34, 36, 37, 200

Pandora Decò

94, 96, 97, 200

Pandora Light

72, 73, 200

Pandora Shelf

201

Tama

118, 119, 120, 121, 201

Tama Crédence

75, 126, 127, 128, 129, 201

Shelving systems and boiseries

Brera

26, 27, 29, 36, 37, 105, 130, 131, 202

Drizzle

82, 83, 150, 151, 203

Elle Plus 10

79, 80, 81, 84, 203

Isola

22, 23, 204

Navigli

41, 42, 43, 204

Tortona

67, 68, 69, 71, 76, 93, 120, 122, 144, 145, 204

Accessories

Paperweight

102, 103, 205

Desk Card Holder

64, 205

Candle Holders

32, 206

Candle Holders Hexagonal

21, 33, 206

Odette Tray Oval

18, 19, 145, 146, 149, 206

Odette Tray Rectangular

33, 207

Folded Tray

93, 207

Tip Tap Toe

38, 207

Tic Tac 14

29, 208

Finishes

209

**Fragile
and very strong,
transparent
and immutable,
light and eternal,
glass is the incipit
of this story.**



Audrey Sofa
Cookies Coffee Table
Athus Sideboard
Sole Mirror
Bolle Tela Hanging lamp



Bolle Tela
Hanging Lamp

Massimo Castagna
2018



Tweed is a texture inspired by the world of textiles. A machine-made manufacture introduced by the company to give new life to Maat and Cookies, two products until now conceived in marble. The application on wood opens up a new scenario and becomes a symbol for a more graphic and contemporary style.

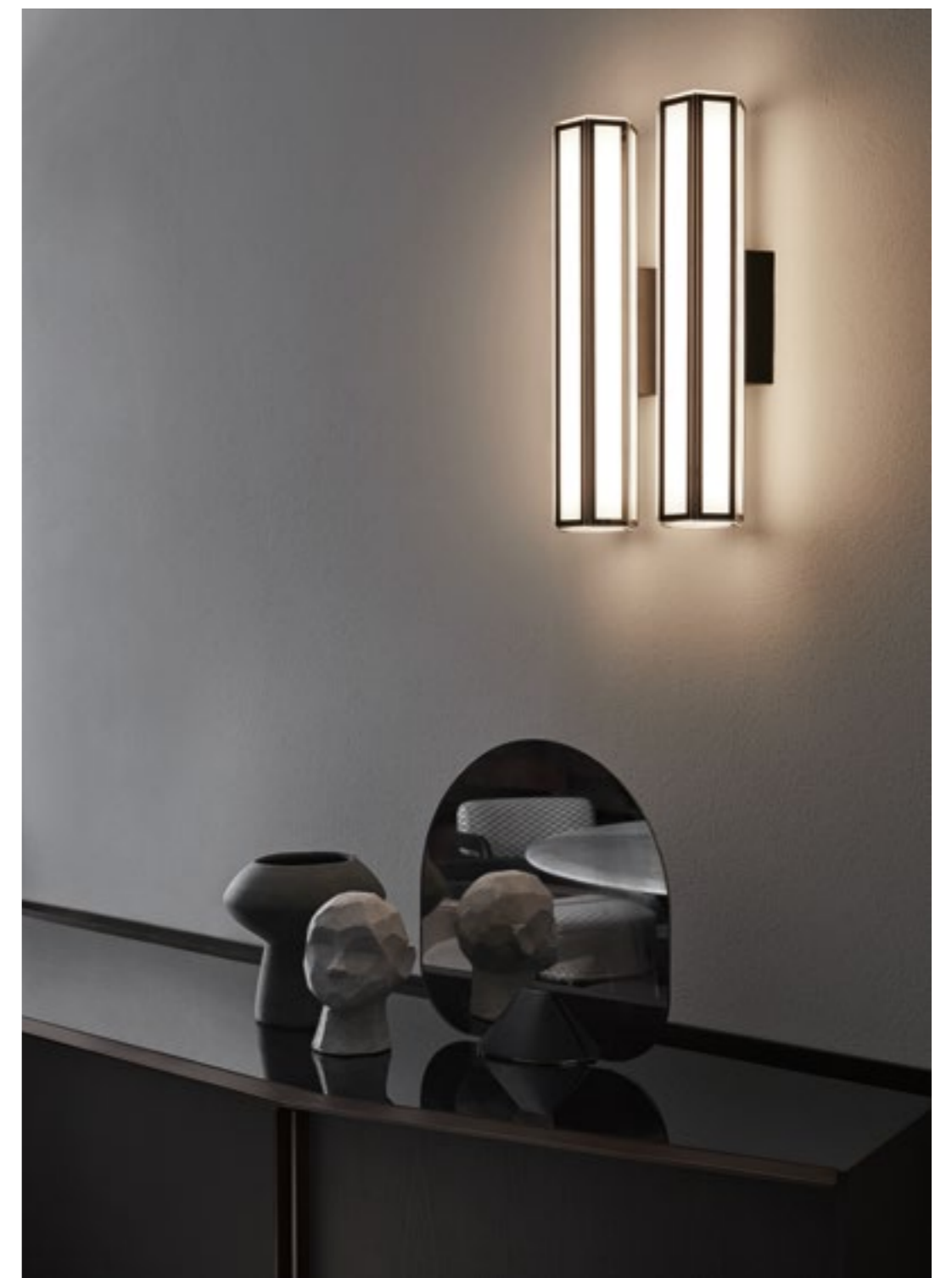
Wood, in fact, is a warm material that contrasts with the brass details of the products, creating a refined and unexpected effect.





Audrey Poltrona Armchair
Athus Sideboard

Lanterna Wall light
Athus Sideboard
Flabello Table mirror



The clean and minimal design contrasts with the precious materials: the white Carrara marble of the table top and the brass-plated “supermirror” stainless steel of the base. Just a few words to present it. Oto Big doesn’t need introductions.

Oto Big Table
Keyko Chair
Athus Sideboard
Lanterna Wall light
Epsilon Hanging lamp



Oto Big
Table

Oscar and Gabriele Buratti
2018





Rigorous lines, clean cuts,
pure shapes draw design objects
that recall architectures.
Tables, chairs and complements
that can dress any type of space,
thanks to an essential
and unmistakable personality.

These designers use architecture
as a continuous inspiration.

Air Unit Unit
Bolle Sola Hanging lamp
Oto Table
Thea Chair
Riki Trolley

Odette Mirror
Detail

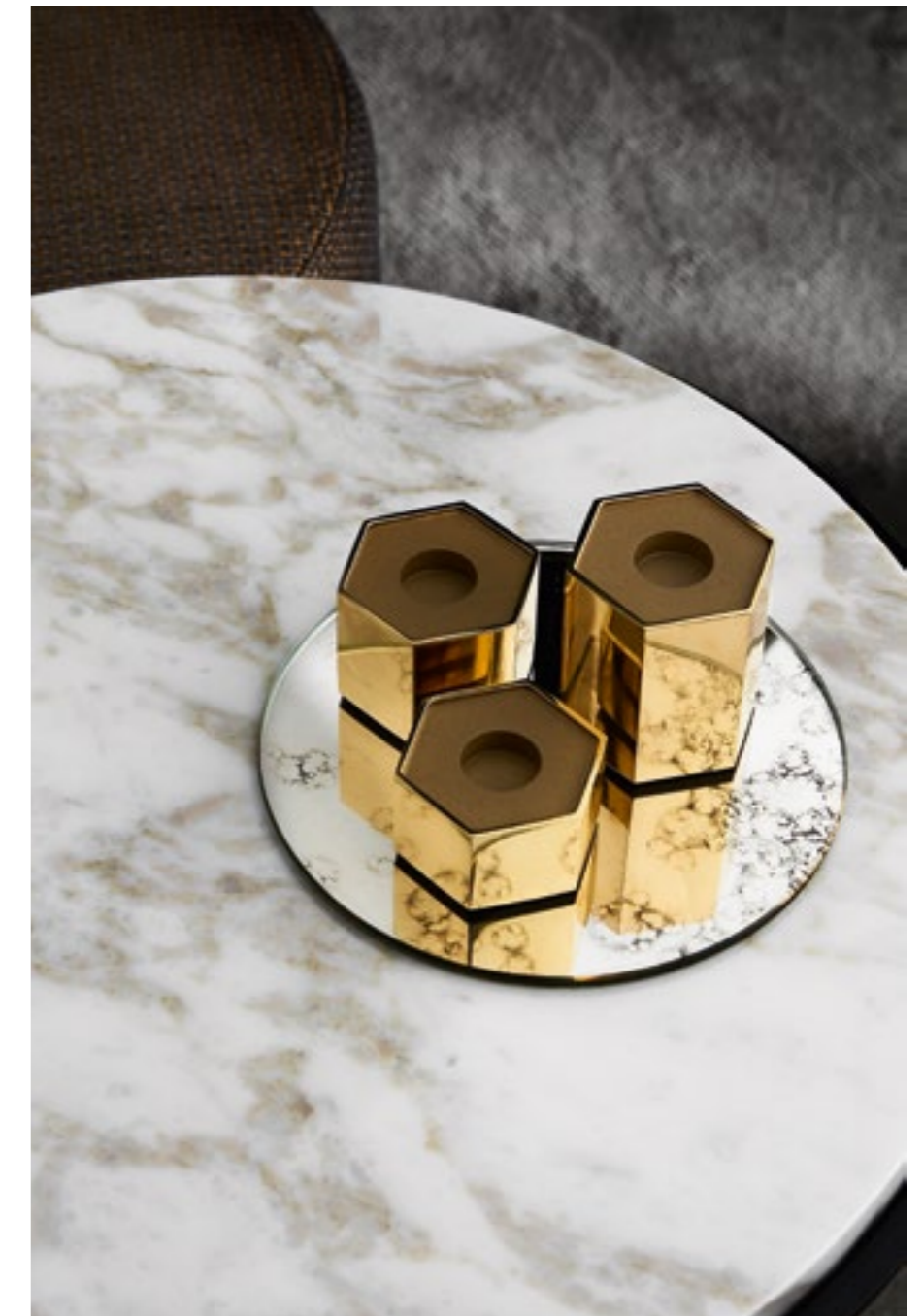


Odette Mirror
Thea Chair
Oto Table
Odette Tray-Oval Tray



Bolle Hanging lamp
Twelve Day-Bed
Fante Coffee table

Fante Coffee Table
Candle Holders-Hexagonal





Isola Shelving system
Detail



**Combination
of materials,
accurate
manufacturing
and perfect inlays,
but also continuous
experimentation
with new finishes.**



Tama Console
Bolle Sola Hanging lamp
Jackie Chair



Brera Shelving system
Nori Coffee Table
Tetris Coffee Table
Cloud Sofa



Nori Coffee table
Tetris Coffee table

Tic Tac 14 Clock
Brera Shelving system



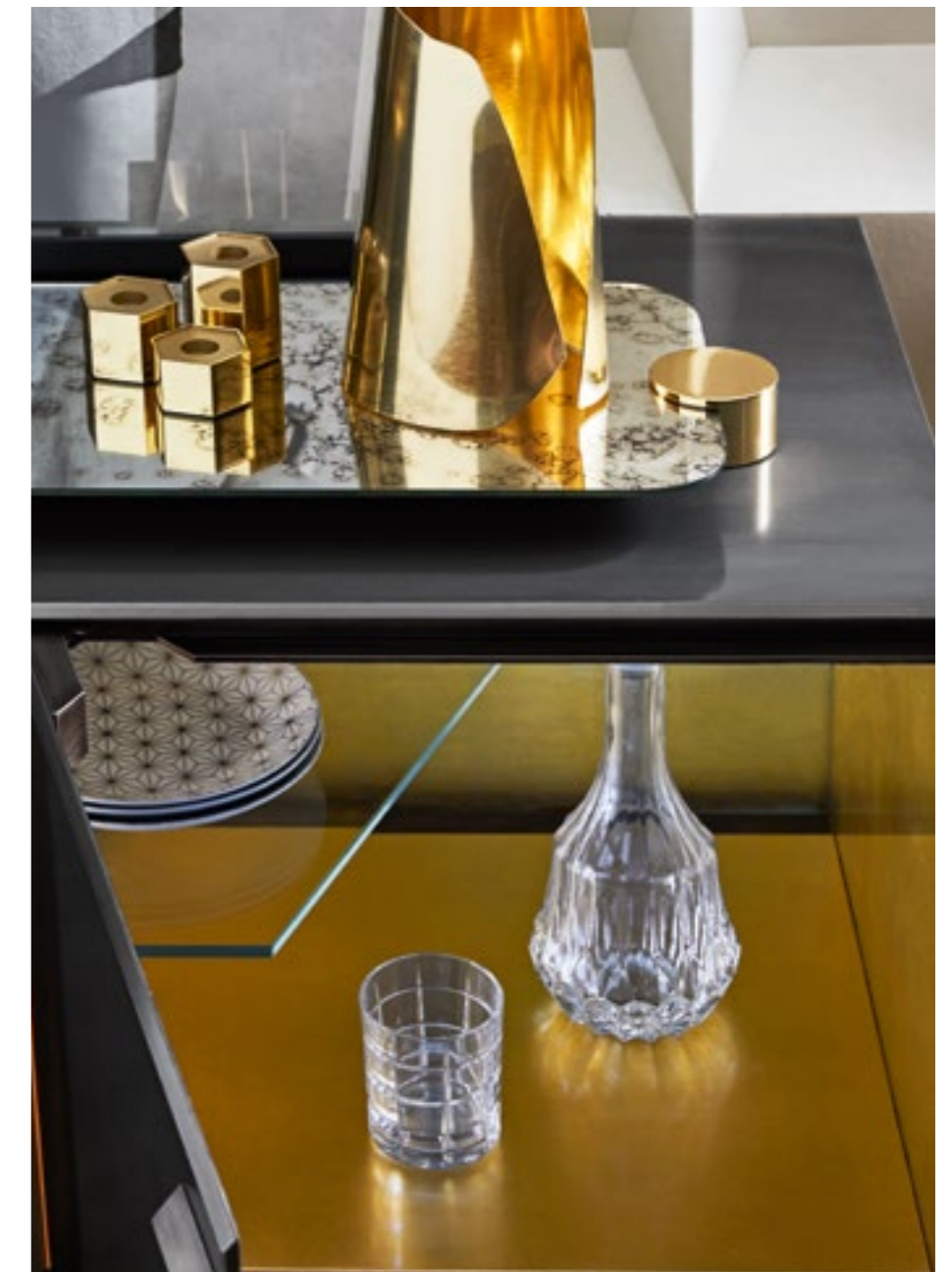


The gold leaf is an example of contamination between tradition and innovation. Classically used on wood, we love to match it with glass, to give life to surprising effects, sometimes even in antithesis one with another.

As in the case of Pandora, a sober and opaque sideboard on the exterior, precious and dazzling inside. And this thanks to the extraordinary double-side nature of glass, a feature with unexpected potential.



Pandora Sideboard
Candle Holders



Candle Holders
Pandora Sideboard
Odette Tray-Rectangular Tray



Bolle Sola Hanging lamp
Pandora Craquelé Sideboard
Haumea-T Table
Jackie Chair



Bolle Sola
Hanging lamp

*Massimo Castagna
2015*



Bolle Sola Hanging lamp
Pandora Craquelé Sideboard
Haumea-T Table
Jackie Chair
Brera Shelving system
Cloud Sofa
Niagara Mirror
Tama Console

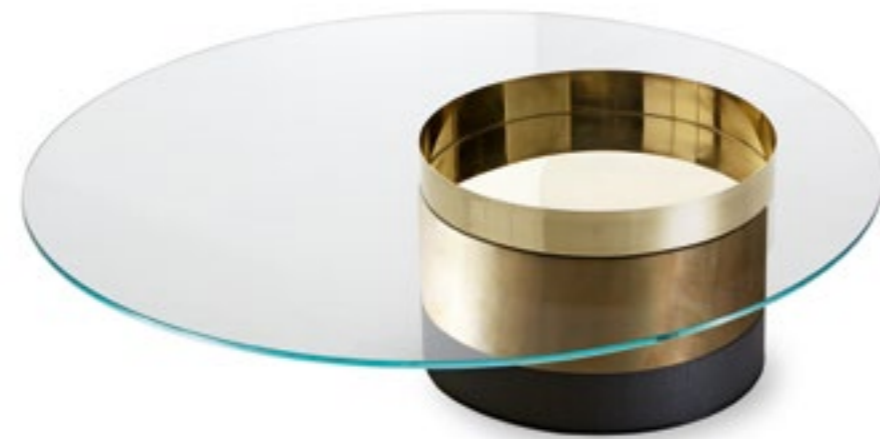
Tip Tap Toe Table game



Cloud Poltrona Armchair
Cloud Pouf Pouf
Twelve Coffee Table
Sole Mirror

Simple and minimal design in an unexpected combination of materials and a range of precious workmanship. Haumea is a unique and distinctive product, available in several combinations of finishes.

Haumea Coffee Table
First Poltrona Armchair
Navigli Shelving system
0414 Chair



Haumea
Coffee table

Massimo Castagna
2015





Navigli
Shelving system



Massimo Castagna
2015

**Mastery means
to touch and feel
the materials, in
order to understand
their soul, which
combined with
our experience gives
life to new living
scenarios.**

Maat Table
Keyko Chair

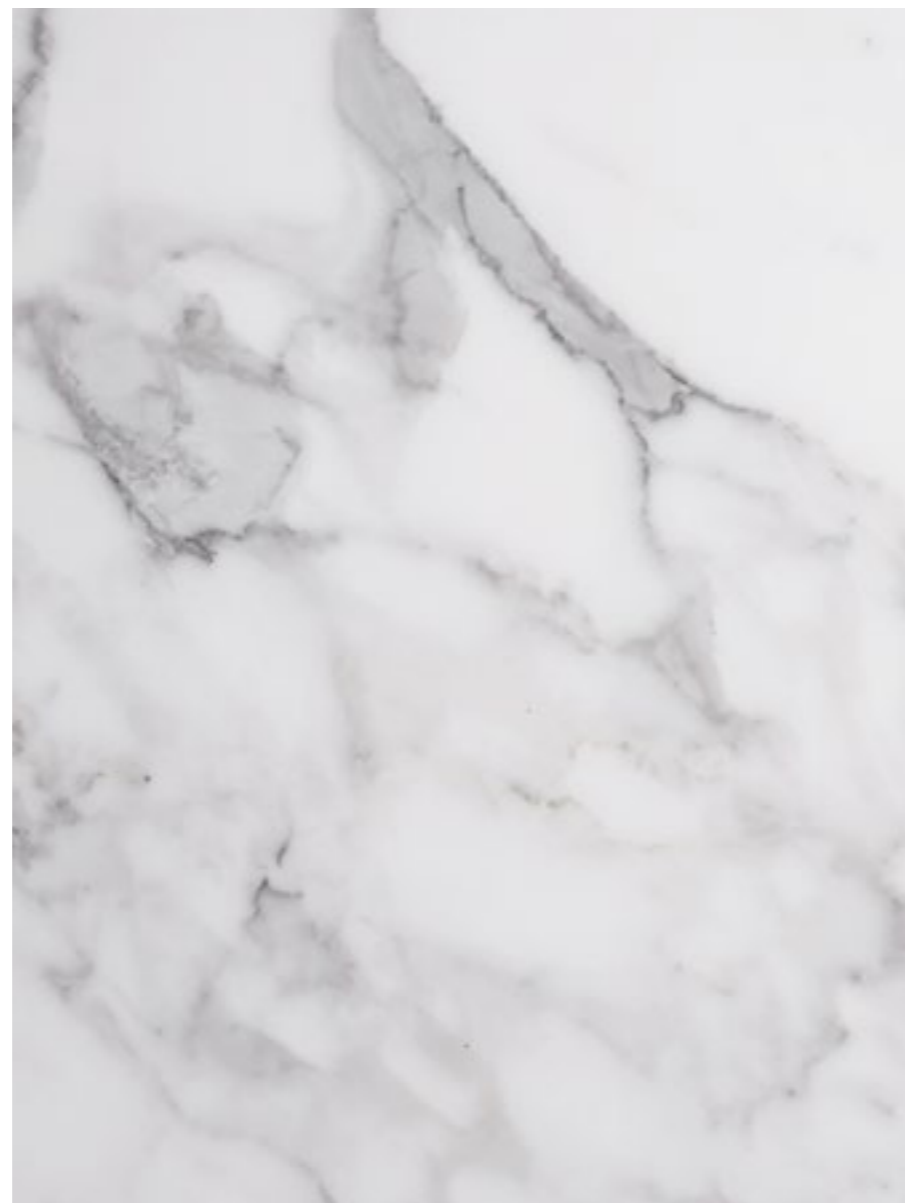


Audrey Sofa
Cookies Coffee Table
Lou Pouf
Chanel Coffee Table



This has always been the favourite marble of sculptors and artists from all over the world. Statuary marble, characterized by an unmistakable shine and a compact structure that facilitates its manufacturing, is the finest and most precious of all marbles.

Appropriate for sophisticated chromatic games, as in the case of the table Cookies, where the contrasts of colour and design enhance its personality.





Cubista
Mirror

Pietro Russo
2018



The manufacturing of glass is an ancient art, that bears with it beautiful stories of Master Glassmakers from around the world. Like all the arts, it must follow a very precise and rigorous process, starting from the cut itself. Since cut glass has a particularly sharp and irregular edge, the grinding process is used to smooth the edge in different ways, depending on the desired result.

A particular type of grinding is the bevelling, a very delicate processing used above all for elements and mirrors of great value. Starting from the edge, a frame effect is created across the whole surface of the glass.



Black&White Beat Mirror
Riki Trolley





Diedro Sideboard
Keyko Chair
Diantha DH Hanging lamp
Maat Table



Diedro
Sideboard

Pietro Russo
2017

Keyko Chair
Maat Table



Diedro Sideboard
Flabello Table mirror



Flabello Table mirror

Lines, shapes and drawn details. In contrast with the minimalism of more “architectural” products, these designers stand out for a more extensive and interpretive formal research, without however separating from rigour and simplicity.

The desire to play with shapes and the aesthetic connection between all the details, from the leg of a table to the junction point between different materials, creates a stylistic connection between these products.



Ori Wall light
Misty Venice Sideboard

Misty Venice Sideboard
Detail





Ori
Wall light

Massimo Castagna
2017



Desk Card Holder



Epsilon Hanging lamp
Selene Vanity desk
Chloé Screen
Lou Pouf

We are an Italian family that has been able to pass down the art of discovering and interpreting precious materials, generation after generation.



Tortona Shelving system
Bolle Tavolo 1 Table lamp

First Poltrona Armchair
First Modulare Sofa
Golden Moon Coffee Table
Tortona Shelving system
Bolle Tavolo 1 Table lamp
Sir T32C Coffee Table
Tetris Coffee Table
Chanel Coffee Table





Tetris
Coffee table

Massimo Castagna
2014

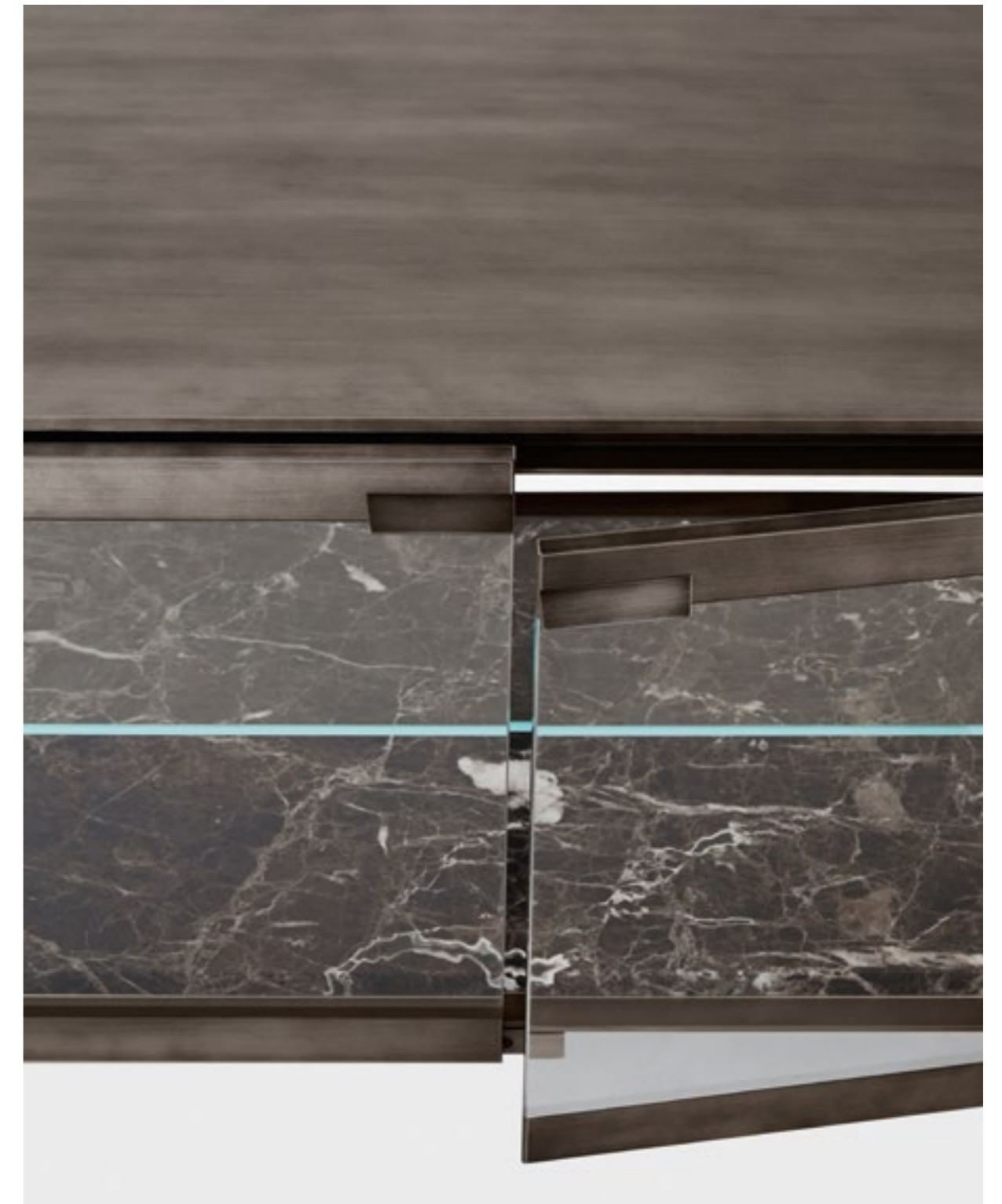


Tortona Shelving system
First Sofa
Tetris Coffee Table



Bolle Tavolo 1 Table lamp
Cloud Sofa
Pandora Light Sideboard

Pandora Light Sideboard
Detail



Because of its linear structure and its unmistakable stage presence, black marble adds character to any room. And it always knows how to do it in a natural and elegant way.

Epsilon Hanging lamp
Platium Table
O414 Chair
Tama Crédence Sideboard





Bolle Sola Hanging lamp
Tortona Shelving system
Connection Coffee Table
Fante Coffee Table
First Modulare Sofa

Connection Coffee Table



Elle Plus 10 Boiserie
Bolle Tavolo 3 Table lamp
Air Up Unit
Air Desk 1 Up Desk
Thea Chair



Bolle Tavolo 3
Table lamp

Massimo Castagna
2015



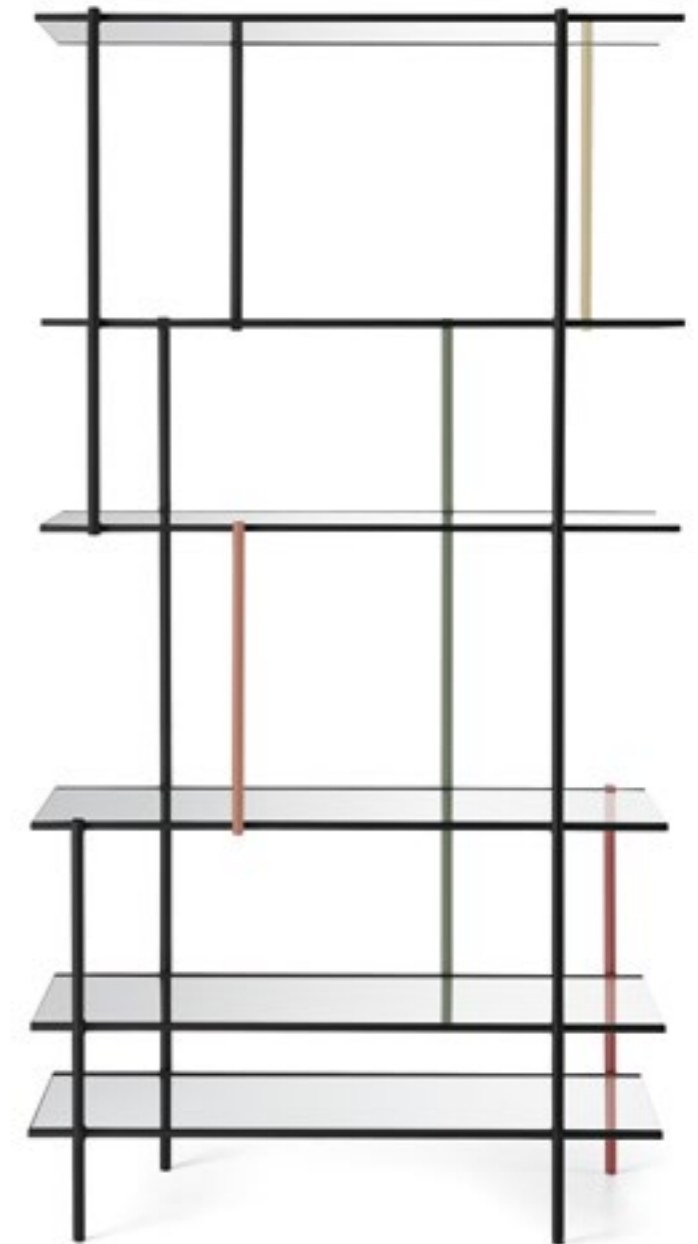


Elle Plus 10 Boiserie
Fante Coffee Table
Dama Coffee Table
Thea Queen Armchair
Haumea-T Lounge table
Lou Pouf



Drizzle
Shelving system

Luca Nichetto
2012



Elle Plus 10 Boiserie
Riki T53 Trolley



Gemma Mirror

The avant-garde of design, the refinement of shapes and the preciousness of materials make of us a unique and dynamic brand. Always projected towards new scenarios to imagine.



Fiona Sofa
Gong Coffee Table
Zen Coffee Table
Eris Hanging lamp



Fiona Sofa
Haumea Coffee Table
Gong Coffee Table
Zen Coffee Table
Eris Hanging lamp
Twelve Coffee Table



Designers who use innovative materials, combining them with each other, but also placing them in contrast. To reinterpret the tradition of design in a contemporary key, in search of the perfect shape.

A perfection that always comes from experimentation, sometimes using unusual paints and manufactures, sometimes reversing the creative process itself. Starting from the result of the finishes and drawing the product around them.



Fiona Sofa
Zen Coffee table



Fiona Sofa
Twelve Coffee table



Folded Tray Tray
Cloud Sofa
Tortona Shelving system



Bolle Hanging lamp
Pandora Decò Sideboard
Eyl Table
0414 Chair



Eyl
Table

Oscar and Gabriele Buratti
2014



Pandora Decò Sideboard
Detail

Pandora Decò Sideboard
Eyl Table
O414 Chair
Riki T53 Trolley





Athus Sideboard
Platium W Table
O414 Chair



Athus
Sideboard

Oscar and Gabriele Buratti
2017



Xeni Bed
Detail



Xeni Bed
Twelve C Bedside table
Twelve Day-Bed
Fante Coffee table
Bolle Terra Floor lamp
Ori Wall light

Tama Secrétaire Writing desk
Paperweight Triangle PW.03



Jackie Chair
Bolle Terra Floor lamp
Tama Secrétaire Writing desk
Paperweight

Research to innovate.
Exploit knowledge,
talent and technology
to give shape to what
does not yet exist.



Brera Shelving system
Bolle Hanging lamp
Cloud Sofa
Haumea Coffee Table
Cong Coffee Table
Eris Hanging lamp
Cloud Poltrona Armchair



0417 Armchair
Gong Coffee table
Bolle Tavolo 1 Table lamp



0417
Armchair

Studio G&R
2017

A sophisticated manufacture that uses the gold leaf applied to wood. The leaf is oxidized and brushed creating a singular weave that resembles a fabric.

Gong Coffee table
Bolle Tavolo 1 Table lamp
Cloud Poltrona Armchair

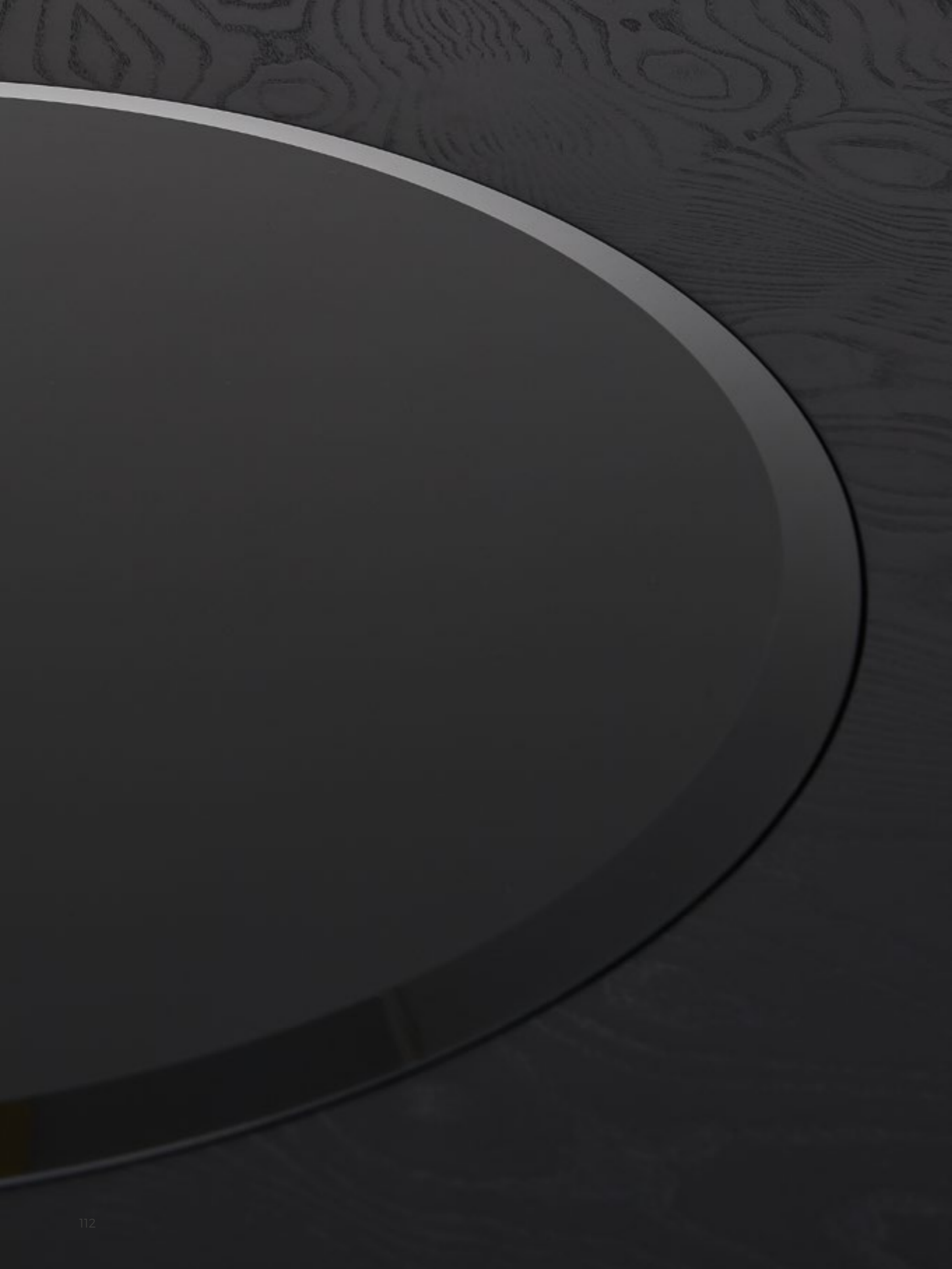
In some points, thanks to the scraping caused by oxidation, we can still glimpse the underlying gold. The table gong is a skilled representation of this technique.



Athus Sideboard
Bolle Tavolo 3 Table lamp
Platium Round Table
O414 Chair
Epsilon Sola Hanging lamp

Athus Sideboard
Bolle Tavolo 3 Table lamp





Athus Sideboard
Bolle Tavolo 3 Table lamp
Platium Round Table
0414 Chair
Epsilon Sola Hanging lamp

**Masterful interpretation
of the concept of fusion
of materials.**

**Glass cylinders shaped
by hand and matched
with brass metal parts
presented in all its
expressions. Bright, satin,
hand-burnished, black
chromed, coppered.**



Diantha DVL Hanging lamp
Detail



Diantha DVL Hanging lamp
Soft Mirror
Fante Coffee Table
Twelve Day-Bed



Zeiss Mirror
Twelve Coffee Table
First Modulare Sofa
Tama Bar unit
Twelve Day-Bed
Lou Pouf
Fante Coffee Table
Haumea Coffee Table

Tama Bar unit
Detail





Tama Bar unit
Tortona Shelving system

Tama Bar unit
Bolle Tavolo 1 Table lamp

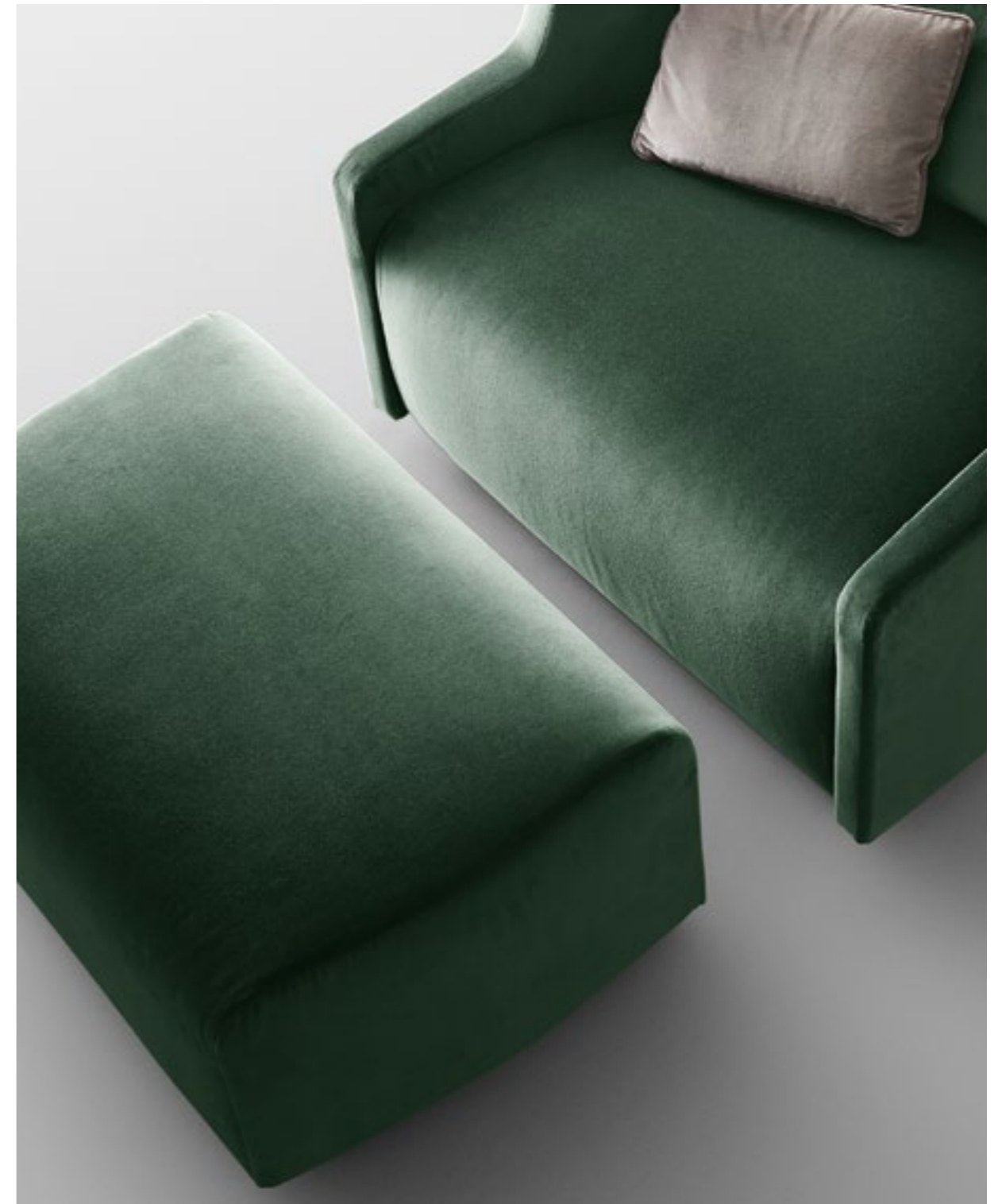




Tortona Shelving system
Zen Desk
Jeckie Chair



**It is from the passion
for perfection and
attention to detail
that a broad and
far-sighted vision
is born.**



First Poltrona Armchair
Detail

First Modulare Sofa
Epsilon Hanging lamp
Dama Coffee Table
Tetris Coffee Table
Twelve Day-Bed
Tama Crédenca Sideboard
Lou Pouf
Twelve Coffee Table
Epsilon Sola Hanging lamp
First Poltrona Armchair
Fante Coffee Table



Tama Créence Sideboard



Tama Créence Sideboard
Detail



Platium System Table
0414 Chair
Diantha DVL Hanging lamp
Brera Shelving system



Platinum System Table
Detail

The metal structure with satin brass finish, the precious upholstery and the polyurethane foam padding give it preciousness and regality. Sophie is an armchair with a strong personality, capable of furnishing any space.

Sophie Armchair
Dama Coffee table
Lou Pouf
Twelve Coffee table



Sophie
Armchair

Federica Biasi
2018



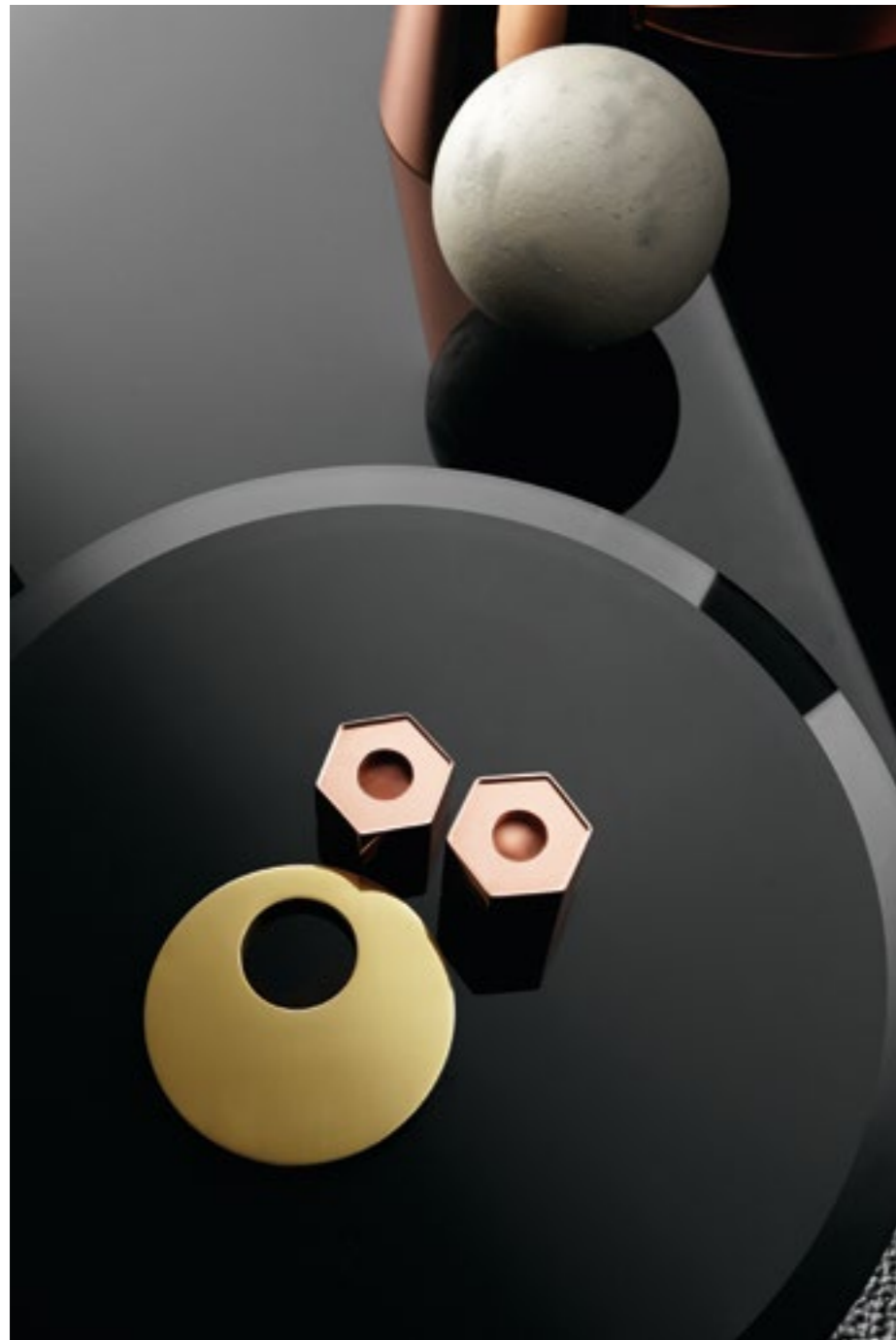
Misty Venice Bar Bar unit
Detail



Misty Venice Bar Bar unit
Sophie Armchair



Oto Mini Coffee table
Detail



Venere Vanity desk
Lou Pouf

Italy is a worldwide icon of design, elegance and passion. This is where our projects come from and all our productions are made. Because for us Italy means, above all, Home.



Bolle Hanging lamp
First Modulare Sofa
First Poltrona Armchair
Lou Pouf
Twelve Coffee table



Bolle Hanging lamp
First Modulare Sofa
First Poltrona Armchair
Lou Pouf
Twelve Coffee table
Fante Coffee table

Twelve Coffee Table



Tortona Shelving system
Narghilè Hanging lamp
Oroshi Table
Jackie Chair
Odette Tray-Oval Tray





Narghilè Hanging lamp
Pandora Sideboard
Orshi Table
Odette Tray-Oval Tray

Narghilè Hanging lamp





Oroshi Table
Jackie Chair



Narghilè Hanging lamp
Pandora Sideboard
Oroshi Table
Jackie Chair
Odette Tray-Oval Tray



Epsilon Hanging lamp
Dolm Table
Pandora Sideboard
Keyko Chair
Drizzle Shelving system



The acid-etching and the manual burnishing of the brass as examples of the uniqueness of the workings. A process that makes the result different and unrepeatable each time.

As for Epsilon, composed of hand-shaped glass cylinders and integrated into parts in hand-burnished brass.





Selene Vanity desk
Detail

Selene Mirror Mirror



Selene Vanity desk
Lou Pouf

From small and tailor-made realities to large-scale productions, our soul remains the same.
Light but indissoluble. A fluid and constant research that moves with mankind and for mankind.
A circle that we know to be perfect, but also imperfect at the same time. We like to think that perfection is contaminated by new ideas and that imperfection is always perfectible.
As our story, that we will not end with a full stop...

Elements

158	Tables
164	Seatings
167	Sofas and armchairs
172	Bed and bedside table
173	Coffee tables
180	Lightings
185	Trolleys
186	Mirrors
193	Consoles
194	Vanities and desks
197	Storage units
202	Shelving systems and boiserie
205	Accessories
209	Finishes

Dolm
pp. 150

Oscar and Gabriele
Buratti
2012

78¼ × 39½ × 29¼
94½ × 39½ × 29¼
110¼ × 43½ × 29¼
126 × 43½ × 29¼
141¾ × 43½ × 29¼
Inches (W × D × H)

Table with 15mm extralight transparent glass top, painted only in the middle part as per samples in the bright version. 45° bevelled glass top. Wooden base covered by painted glass. Available with cable management, on request. Dolm is suitable for modular compositions also in customised sizes (Dolm System).

200 × 100 × 74
240 × 100 × 74
280 × 110 × 74
320 × 110 × 74
360 × 110 × 74
Cm (L × P × H)

Tavolo con piano in cristallo trasparente extralight 15mm, retroverniciato solo nella parte centrale nei colori del campionario nella versione brillante. Piano con bisello a 45°. Basi in legno rivestito in cristallo retroverniciato. Su richiesta può essere dotato di passacavi. Dolm si presta per composizioni modulari, anche in dimensioni speciali (Dolm System).



Eyl
pp. 95, 97

Oscar and Gabriele
Buratti
2012

59¼ × 59¼ × 29¼
82¾ × 51¼ × 29¼
94½ × 51¼ × 29¼
102½ × 51¼ × 29¼
110¼ × 55¼ × 29¼
118¼ × 55¼ × 29¼
Inches (W × D × H)

Table with 15mm painted glass top as per samples in the bright or satin version. Glass top with 3cm bevelled edge. Wooden base covered by painted glass. Supermirror bright stainless steel metal parts.

150 × 150 × 74
210 × 130 × 74
240 × 130 × 74
260 × 130 × 74
280 × 140 × 74
300 × 140 × 74
Cm (L × P × H)

Tavolo con piano in cristallo 15mm retroverniciato nei colori del campionario, nella versione brillante o satinata. Piano con bisello 3cm. Base in legno rivestito in cristallo retroverniciato. Parti metalliche in acciaio inox lucido Supermirror.



Table with 15mm transparent tempered glass top. Black open pore or rust lacquered wooden base. Bright brass, hand burnished brass, coppered brass or black chromed metal parts. Removable tray. Available in the combinations as per our list below.

59¼ × 29¼
63 × 29¼
71 × 29¼

Lounge
59¼ × 25¼
63 × 25¼
71 × 25¼
Inches (Ø × H)

Tavolo con piano in cristallo trasparente temperato 15mm. Base in legno laccato nero poro aperto o ruggine. Parti metalliche in ottone lucido, brunito a mano, ramato o cromato nero. Vassoio amovibile. Disponibile nelle combinazioni sotto elencate.

150 × 74
160 × 74
180 × 74

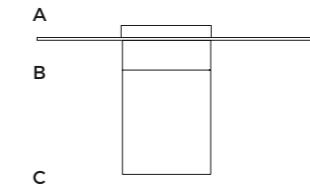
Lounge
150 × 65
160 × 65
180 × 65
Cm (Ø × H)

Haumea-T
pp. 35, 37, 81

Massimo Castagna
2016



- | | | | | | |
|---|---|--|---|--|---|
| 1
A Bright brass
B Burnished brass
C Black open pore | 2
Bright brass
Bright brass
Rust | 3
Black chrome
Black chrome
Black open pore | 4
Black chrome
Coppered brass
Rust | 5
Black chrome
Burnished brass
Rust | 6
Black chrome
Burnished brass
Black open pore |
|---|---|--|---|--|---|



Koy

Oscar and Gabriele
Buratti
2011

Table with aluminium structure covered by tobacco stained or wengé stained oak. Available with embossed white or black lacquered structure or fabric touch effect lacquered structure in chestnut, sand and canapa colours. 12mm transparent or smoked Grigio Italia glass top. Painted glass as per samples in the bright or satin version, on request. Available with cable management, on request. Koy is suitable for modular compositions (Koy System).

55¼ × 35½ × 29¼
63 × 35½ × 29¼
71 × 35½ × 29¼
78¾ × 35½ × 29¼
86¾ × 35½ × 29¼
55¼ × 43½ × 29¼
63 × 43½ × 29¼
71 × 43½ × 29¼
78¾ × 43½ × 29¼
86¾ × 43½ × 29¼

94½ × 43½ × 29¼
102½ × 43½ × 29¼
63 × 55¼ × 29¼
71 × 55¼ × 29¼
71 × 63 × 29¼
55¼ × 55¼ × 29¼
63 × 63 × 29¼
71 × 71 × 29¼
Inches (W × D × H)

Tavolo con struttura in alluminio rivestito in rovere tinto tabacco o tinto wengé. Disponibile anche laccato bianco o nero goffrato o laccato effetto tessuto nei colori castagna, sabbia e canapa. Piano in cristallo trasparente o Grigio Italia 12mm. Su richiesta retroverniciato nei colori del campionario nella versione brillante o satinata. Su richiesta può essere dotato di sistema passacavi. Koy si presta per composizioni modulari (Koy System).

140 × 90 × 74
160 × 90 × 74
180 × 90 × 74
200 × 90 × 74
220 × 90 × 74
140 × 110 × 74
160 × 110 × 74
180 × 110 × 74
200 × 110 × 74
220 × 110 × 74

240 × 110 × 74
260 × 110 × 74
160 × 140 × 74
180 × 140 × 74
180 × 160 × 74
140 × 140 × 74
160 × 160 × 74
180 × 180 × 74
Cm (L × P × H)



Layer

Luca Nichetto
2010

51¼ × 29¼
55¼ × 29¼
59¼ × 29¼
Inches (Ø × H)

Table with 15mm transparent glass top. Wooden base made of superimposed conical rings. Available in natural ash, wengé stained or white, black, saffron yellow, sand or chestnut open pore lacquered. The colour sequence for the base shall be indicated when placing the order.

130 x 75
140 x 75
150 x 75
Cm (Ø × H)

Tavolo con piano in cristallo trasparente 15mm. Base in legno composta da anelli conici sovrapposti, disponibile in frassino naturale, tinto wengé oppure laccato bianco, nero, zafferano, sabbia o castagna a poro aperto. La sequenza dei colori del basamento deve essere comunicata al momento dell'ordine.

Table with 15mm bevelled and bright painted glass top. Bright lacquered metal structure. Available in the colours black, blue grey and liquorice.

35½ × 29¼
39½ × 29¼
47¼ × 29¼
51¼ × 29¼
55¼ × 29¼
59¼ × 29¼
Inches (Ø × H)

Tavolo con piano in cristallo 15mm bisellato e retroverniciato nella versione brillante. Struttura in metallo verniciato lucido. Disponibile nei colori nero, blu grigio e liquirizia.

90 x 74
100 x 74
120 x 74
130 x 74
140 x 74
150 x 74
Cm (Ø × H)

Oto

pp. 16, 19

Oscar and Gabriele
Buratti
2015



Maat

pp. 54, 56, 45

Pietro Russo
2017

86¼ × 39½ × 30
98½ × 39½ × 30
110¼ × 39½ × 30
Inches (W × D × H)

Table with black hand brushed anodised aluminium structure. Bright brass details. Inlaid wooden top with "Tweed" pattern. Available also in Bianco Statuario and Nero Marquina marble (29¼" H) laminated bevelled top. 15mm painted bevelled glass top as per samples in the bright or satin version, on request (29½" H).

220 x 100 x 76
250 x 100 x 76
280 x 100 x 76
Cm (L × P × H)

Tavolo con struttura in alluminio spazzolato a mano e anodizzato nero. Dettagli in ottone lucido. Piano in legno intarsiato con motivo "Tweed". Disponibile anche in marmo Bianco Statuario e Nero Marquina (74,5 cm H) stratificato e bisellato. Su richiesta piano in cristallo 15mm bisellato retroverniciato nei colori del campionario nella versione brillante o satinata (75,5 cm).

Table in Carrara white or Nero Marquina marble. Brass-plated "supermirror" stainless steel base.

63 × 28½h
71 × 28½
Inches (Ø × H)

Tavolo in marmo bianco di Carrara o Nero Marquina. Base in acciaio inox "supermirror" ottonato.

160x72h
180x72h
Cm (Ø × H)

Oto Big

pp. 14, 15

Oscar and Gabriele
Buratti
2018



Oroshi

pp. 145, 146, 148, 149

Massimo Castagna
2018

63 × 63 × 29¼
71 × 71 × 29¼
94½ × 47¼ × 29¼
9 4½ × 63 × 29¼
110¼ × 47¼ × 29¼
Inches (W × D × H)

Table in river oak. Available also in black open pore lacquered oak. Top with distinctive radiate bevelled edge.

160 x 160 x 74h
180 x 180 x 74h
240 x 120 x 74h
240 x 160 x 74h
280 x 120 x 74h
Cm (L × P × H)

Tavolo in rovere fossile. Disponibile anche in rovere laccato nero poro aperto. Piano dal bordo caratteristico con bisello raggato.

Table with 15mm black painted glass top, in the bright or satin version. Large bevel of 4cm on two sides. Sahara Noir marble base. Supermirror bright stainless steel bottom plate.

102½ × 47¼ × 29¼
110¼ × 47¼ × 29¼
118¼ × 47¼ × 29¼
Inches (W × D × H)

Tavolo con piano in cristallo 15mm retroverniciato nero, nella versione brillante o satinata. Importante bisellatura di 4cm su due lati del piano. Base in marmo Sahara Noir. Piatto a terra in acciaio inox lucido Supermirror.

260 x 120 x 74
280 x 120 x 74
300 x 120 x 74
Cm (L × P × H)

Platium

pp. 75

Oscar and Gabriele
Buratti
2016



Platium Round

pp. 111, 112, 113

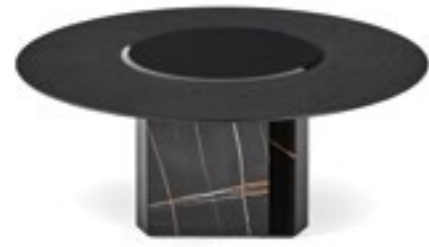
Oscar e Gabriele
Buratti
2018

71 x 30½
78¾ x 30½
86¾ x 30½
94½ x 30½
Inches (Ø x H)

Table with black stained brushed ash top. Rotating lazy susan in 10 mm tempered bevelled black bright painted glass. Sahara Noir marble base. Supermirror® bright stainless steel bottom plate.

180 x 77h
200 x 77h
220 x 77h
240 x 77h
Cm (Ø x H)

Tavolo con piano in frassino spazzolato tinto nero. Piano girevole in cristallo retroverniciato nero brillante 10mm temperato e bisellato. Base in marmo Sahara Noir. Piatto a terra in acciaio inox lucido "supermirror".



Yol

Oscar and Gabriele
Buratti
2013

71 x 29¼
78¾ x 29¼
86¾ x 29¼
94½ x 29¼
Inches (Ø x H)

Table with 15mm extralight transparent glass top. In the middle of the top rotating plate in 10mm painted glass as per samples, in the bright or satin version. Wooden base covered by painted glass.

180 x 74
200 x 74
220 x 74
240 x 74
Cm (Ø x H)

Tavolo con piano in cristallo trasparente extralight 15mm. Al centro del tavolo piano girevole in cristallo 10mm retroverniciato nei colori del campionario nella versione brillante o satinata. Base in legno rivestita in cristallo retroverniciato.



Platium System

pp. 131, 132, 133

Oscar e Gabriele
Buratti
2018

141¼ x 47¼ x 29¼
157½ x 47¼ x 29¼
18¼ x 47¼ x 29¼
197 x 47¼ x 29¼
Inches (W x D x H)

Table with 15mm decorated by hand with an exclusive antique bronze finish or painted modular glass top as per samples, in the bright or satin version. Large bevel of 4cms on two sides. Wooden base covered by glass. "Supermirror" bright stainless steel bottom plate.

360 x 120 x 75.5
400 x 120 x 75.5
460 x 120 x 75.5
500 x 120 x 75.5
Cm (L x P x H)

Tavolo con piano modulare in cristallo 15mm decorato a mano nella finitura esclusiva bronzo anticato oppure retroverniciato nei colori di campionario, nella versione brillante o satinata. Importante bisellatura di 4cm su due lati del piano. Base in legno rivestita in cristallo. Piatto a terra in acciaio inox lucido "supermirror".



Table with black brushed lacquered ash top. Available also with hand-decorated craquelé glass top. Black hand brushed anodised aluminium base with bright brass plated details. Possibility to place more tables in different shapes one close to the other getting many configurations as per drawing.

Tavolo con piano in frassino spazzolato laccato nero. Disponibile anche con piano in cristallo decorato a mano nella finitura Craquelé. Base in alluminio spazzolato a mano e anodizzato nero con dettagli ottonati lucidi. Possibilità di accostare più tavoli in forme diverse per ottenere svariate configurazioni a disegno.

Zen

Massimo Castagna
2018



Platium W

pp. 99

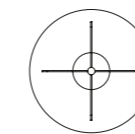
Oscar e Gabriele
Buratti
2017

102½ x 47¼ x 29¼
110¼ x 47¼ x 29¼
118¼ x 47¼ x 29¼
Inches (W x D x H)

Table with black stained brushed ash top and Sahara Noir or Grey Stardust marble base. Supermirror bright stainless steel bottom plate.

260 x 120 x 75
280 x 120 x 75
300 x 120 x 75
Cm (L x P x H)

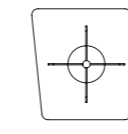
Tavolo con piano in frassino spazzolato tinto nero e base in marmo Sahara Noir o Grigio Stardust. Piatto a terra in acciaio inox lucido Supermirror.



A

39½ x 29¼
39½ x 25¾

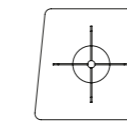
100 x 74
100 x 65



B

35½ x 35½ x 29¼
35½ x 35½ x 25¾

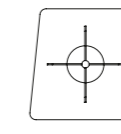
90 x 90 x 74
90 x 90 x 65



C

35½ x 35½ x 29¼
35½ x 35½ x 25¾

90 x 90 x 74
90 x 90 x 65



D

35½ x 35½ x 29¼
35½ x 35½ x 25¾

90 x 90 x 74
90 x 90 x 65

O414

pp. 41, 75, 94, 97, 111, 113, 130, 131

Studio G&R
2014



22½ × 20½ × 29¾
Inches (W × D × H)

Armchair with black (mod. Layer) lacquered open pore solid curved ash structure. Available also in natural ash, tobacco stained or white open pore lacquered ash. Seat and backrest covered by fabric or leather as per sample.

57 x 52 x 75
Cm (L × P × H)

Poltroncina con struttura in massello di frassino curvato tinto nero poro aperto (mod. Layer). Disponibile anche in frassino naturale, tinto tabacco o laccato bianco poro aperto. Seduta e schienale rivestiti in tessuto o pelle nei colori del campionario.

Jackie

pp. 25, 34, 36, 103, 145, 148, 149

Stefano Bigi
2014



21½ × 22¼ × 31½

Lounge
21½ × 22¼ × 28¾
Inches (W × D × H)

Upholstered armchair/chair completely covered by fabric or leather as per sample. Black (mod. Layer) open pore lacquered ash legs, on request. Lounge version: seat's height 40cm.

54 x 56 x 80

Lounge
54 x 56 x 73
Cm (L × P × H)

Poltroncina/Sedia imbottita completamente rivestita in tessuto o in pelle nei colori del campionario. Su richiesta gambe in frassino tinto nero poro aperto (mod. Layer). Versione Lounge: altezza della seduta 40cm.

Chair with black (mod. Layer) lacquered open pore solid curved ash structure. Available also in natural ash, tobacco stained or white open pore lacquered ash. Seat and backrest covered by fabric or leather as per sample.

21 × 20¼ × 29½
Inches (W × D × H)

Sedia con struttura in massello di frassino curvato tinto nero poro aperto (mod. Layer). Disponibile anche in frassino naturale, tinto tabacco o laccato bianco poro aperto. Seduta e schienale rivestiti in tessuto o pelle nei colori del campionario.

53 x 51 x 74,5
Cm (L × P × H)

Pouffe in non-deformable foam polyurethane in different density and polyester fibre with wooden inside structure. Metal parts in satin brass. Covered by fabric or leather as per sample.

Pouffe
Ø 15 × 18¼
23 × 14¼ × 18¼

Lounge
Ø 15 × 16¼
23 × 14¼ × 16¼
Inches (W × D × H)

Pouf in poliuretano espanso indeformabile a densità differenziate e fibra poliestere con struttura interna in legno. Parti metalliche in ottone satinato. Rivestimento in tessuto o pelle nei colori del campionario.

Pouf
Ø 38 x 46
58 x 36 x 46

Lounge
Ø 38 x 41
58 x 36 x 41
Cm (L × P × H)

Chair with seat and backrest covered by fabric or leather as per sample. Black (mod. Layer) open pore lacquered ash legs.

19¼ × 22½ × 32
Inches (W × D × H)

Sedia con seduta e schienale rivestiti in tessuto o pelle nei colori del campionario. Gambe in frassino tinto nero poro aperto (mod. Layer).

50 x 57 x 81
Cm (L × P × H)

Keyko

pp. 15, 45, 54, 56, 150, 151

Pinuccio Borghonovo
2017



Lou

pp. 46, 47, 65, 80, 81, 118, 126, 127, 135, 139, 141, 142, 155

Studio G&R
2015



Thea

pp. 16, 19, 79

Pinuccio Borghonovo
2015



**Thea
Queen**

pp. 80, 81

*Pinuccio Borgonovo
2016*



Chair
25 x 25 x 31½
Lounge
25 x 25 x 28
Inches (W x D x H)

Chair with seat and backrest covered by fabric or leather as per sample. Black (mod. Layer) open pore lacquered ash legs.

Sedia
63 x 63 x 80
Lounge
63 x 63 x 71
Cm (L x P x H)

Sedia con seduta e schienale rivestiti in tessuto o pelle nei colori del campionario. Gambe in frassino tinto nero poro aperto (mod. Layer).

Armchair with black (mod. Layer) lacquered open pore solid curved ash structure. Available also in natural ash, tobacco stained or white open pore lacquered ash. Seat and backrest covered by fabric or leather as per sample.

27¼ x 25¼ x 25¼
Inches (W x D x H)

Poltroncina con struttura in massello di frassino curvato tinto nero poro aperto (mod. Layer). Disponibile anche in frassino naturale, tinto tabacco o laccato bianco poro aperto. Seduta e schienale rivestiti in tessuto o pelle nei colori del campionario.

70 x 64 x 64
Cm (L x P x H)

0417
pp. 106, 107

*Studio G&R
2017*



Sofa in non-deformable foam polyurethane in different density and polyester fibre with wooden inside structure. Black lacquered wooden feet. Available covered by fabric or leather as per sample. Decorative polyester fibre cushions, on request.

Sofa
96½ x 49¼ x 29¾
106½ x 53¼ x 29¾
126 x 61½ x 29¾
Inches (W x D x H)

Decorative cushion
15¾ x 15¾
23¾ x 23¾
Inches (W x H)

Divano in poliuretano espanso indeformabile a densità differenziate e fibra poliestere con struttura interna legno. Piedi in legno laccato nero. Disponibile con rivestimento in tessuto o pelle nei colori del campionario. Cuscini decorativi in fibra poliestere, su richiesta.

Divano
245 x 125 x 75
270 x 135 x 75
320 x 156 x 75
Cm (L x P x H)

Cuscino decorativo
40 x 40
60 x 60
Cm (L x H)

Audrey
pp. 7, 46, 47

*Massimo Castagna
2017*



Audrey Poltrona

Massimo Castagna
2018

pp. 12



Sofa
34½ × 42¾ × 29¾
41 × 49¾ × 29¾
Inches (W × D × H)

Decorative cushion
15¾ × 15¾
Inches (W × H)

Swivel armchair in nondeformable foam polyurethane in different densities and polyester fibre with wooden inside structure. A polyester fibre back cushion included. Available covered by fabric or leather as per sample. Decorative polyester fibre cushion, on request.

Divano
87 x 108 x 75h
104 x 126 x 75h
Cm (L × P × H)

Cuscino decorativo
40 x 40
Cm (L × H)

Poltrona girevole in poliuretano espanso indeformabile a densità differenziate e fibra poliestere con struttura interna legno, corredata di un cuscino schienale in fibra poliestere. Disponibile con rivestimento in tessuto o pelle nei colori del campionario. Cuscino decorativo in fibra poliestere, su richiesta.

Pouffe in non-deformable foam polyurethane in different density and polyester fibre with wooden inside structure. Black lacquered wooden feet. Available covered by fabric or leather as per sample.

43½ × 25¼ × 14¼
43½ × 41½ × 14¼
Inches (W × D × H)

Pouf in poliuretano espanso indeformabile a densità differenziate e fibra poliestere con struttura interna in legno. Piedi in legno laccato nero. Disponibile con rivestimento in tessuto o pelle nei colori del campionario.

110 x 64 x 36
110 x 105 x 36
Cm (L × P × H)

Cloud Pouf

Massimo Castagna
2017

pp. 39



Cloud

Massimo Castagna
2016

pp. 26, 27, 36, 37, 72,
93, 105



Sofa
86¾ × 39½ × 29¾
102½ × 39½ × 29¾
Inches (W × D × H)

Decorative cushion
15¾ × 15¾
23¾ × 23¾
Inches (W × H)

Sofa in non-deformable foam polyurethane in different density and polyester fibre with wooden inside structure. Black lacquered wooden feet. Available covered by fabric or leather as per sample. Decorative polyester fibre cushions, on request.

Divano
220 x 100 x 75
260 x 100 x 75
Cm (L × P × H)

Cuscino decorativo
40 x 40
60 x 60
Cm (L × H)

Divano in poliuretano espanso indeformabile a densità differenziate e fibra poliestere con struttura interna in legno. Piedi in legno laccato nero. Disponibile con rivestimento in tessuto o pelle nei colori del campionario. Cuscini decorativi in fibra poliestere, su richiesta.

Modular sofa in non-deformable foam polyurethane in different density and polyester fibre with wooden inside structure. Capitoné back. Mixed down padding cushions. Available covered by fabric or leather as per sample. Decorative cushions on request.

Divano modulare in poliuretano espanso indeformabile a densità differenziate e fibra poliestere con struttura interna in legno. Schienale lavorato in capitonné. Cuscini misto piuma. Disponibile con rivestimento in tessuto o pelle nei colori del campionario. Cuscini decorativi su richiesta.

Fiona

Massimo Castagna
2018

pp. 87, 88, 89, 92, 93



Cloud Poltrona

Massimo Castagna
2016

pp. 39, 105, 109



Armchair
43½ × 39½ × 29¾
Inches (W × D × H)

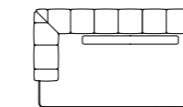
Decorative cushion
15¾ × 15¾
23¾ × 23¾
Inches (W × H)

Poltrona in non-deformable foam polyurethane in different density and polyester fibre with wooden inside structure. Black lacquered wooden feet. Available covered by fabric or leather as per sample. Decorative polyester fibre cushions, on request.

Poltrona
110 x 100 x 75
Cm (L × P × H)

Cuscino decorativo
40 x 40
60 x 60
Cm (L × H)

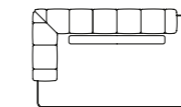
Armchair in poliuretano espanso indeformabile a densità differenziate e fibra poliestere con struttura interna in legno. Piedi in legno laccato nero. Disponibile con rivestimento in tessuto o pelle nei colori del campionario. Cuscini decorativi in fibra poliestere, su richiesta.



A

47¼ × 39½ × 28
67 × 39½ × 28
86¾ × 39½ × 28

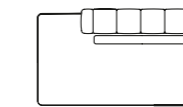
120 x 100 x 71
170 x 100 x 71
220 x 100 x 71



B

67 × 39½ × 28
86¾ × 39½ × 28

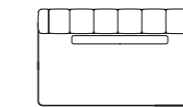
170 x 100 x 71
220 x 100 x 71



C

67 × 39½ × 28
86¾ × 39½ × 28

170 x 100 x 71
220 x 100 x 71



D

47¼ × 39½ × 28
67 × 39½ × 28
86¾ × 39½ × 28

120 x 100 x 71
170 x 100 x 71
220 x 100 x 71

First

pp. 71

Massimo Castagna
2014



Sofa
67¼ x 31½ x 27
Inches (W x D x H)

Decorative cushion
14 x 10
22¼ x 11¼
15¼ x 15¼
Inches (W x H)

Sofa in non-deformable foam polyurethane in different density and polyester fibre with wooden inside structure. Black lacquered wooden feet. Available covered by fabric or leather as per sample. Decorative polyester fibre cushions, on request.

Divano
172 x 80 x 68
Cm (L x P x H)

Cuscino decorativo
35 x 25
56 x 28
40 x 40
Cm (L x H)

Divano in poliuretano espanso indeformabile a densità differenziate e fibra poliestere con struttura interna in legno. Piedi in legno laccato nero. Disponibile con rivestimento in tessuto o pelle nei colori del campionario. Cuscini decorativi in fibra poliestere, su richiesta.

Armchair with foam polyurethane padding. Removable cover in fabric or leather, available as per samples. Metal structure in satin brass plated finish.

43½ x 30¾ x 33½
Inches (W x D x H)

Poltrona con imbottitura in poliuretano espanso. Rivestimento sfoderabile in tessuto o pelle, disponibile nei colori del campionario. Struttura in metallo con finitura ottone satinato.

115,5 x 95 x 76
Cm (L x P x H)

Sophie

pp. 134, 135, 137

Federica Biasi
2018



First Modulare

pp. 68, 69, 76, 118, 126,
127, 141, 142

Massimo Castagna
2015



Sofa
42¼ x 38¾ x 27
65¾ x 38¾ x 27
81½ x 38¾ x 27
Inches (W x D x H)

Decorative cushion
14 x 10
22¼ x 11¼
15¼ x 15¼
Inches (W x H)

Modular sofa in non-deformable foam polyurethane in different density and polyester fibre with wooden inside structure. Black lacquered wooden feet. Available covered by fabric or leather as per sample. Decorative polyester fibre cushions, on request.

107 x 98 x 68
167 x 98 x 68
207 x 98 x 68
Cm (L x P x H)

Cuscino decorativo
35 x 25
56 x 28
40 x 40
Cm (L x H)

Divano modulare in poliuretano espanso indeformabile a densità differenziate e fibra poliestere con struttura interna in legno. Piedi in legno laccato nero. Disponibile con rivestimento in tessuto o pelle nei colori del campionario. Cuscini decorativi in fibra poliestere, su richiesta.

Day bed with hand burnished brass structure with mattress and headrest in foam polyurethane covered by fabric or leather as per sample.

63 x 19¼ x 14
78¾ x 31½ x 15¼
Inches (W x D x H)

Day bed con struttura in ottone brunito a mano con materasso e poggiatesta in poliuretano espanso rivestito in tessuto o pelle nei colori del campionario.

160 x 50 x 35
200 x 80 x 40
Cm (L x P x H)

Twelve Day-Bed

pp. 20, 101, 117, 118,
126, 127

Massimo Castagna
2016



First Poltrona

pp. 41, 68, 69, 125, 126,
127, 141, 142

Massimo Castagna
2015



Armchair
34½ x 31½ x 27
Inches (W x D x H)

Pouffe
30¾ x 19¾ x 15
Inches (W x H)

Armchair and pouffe in non-deformable foam polyurethane in different density and polyester fibre with wooden inside structure. Black lacquered wooden feet. Available covered by fabric or leather as per sample. Decorative polyester fibre cushions, on request.

Poltrona
87 x 80 x 68
Cm (L x P x H)

Pouf
78 x 50 x 38
Cm (L x P x H)

Poltrona e pouf in poliuretano espanso indeformabile a densità differenziate e fibra poliestere con struttura interna in legno. Piedi in legno laccato nero. Disponibile con rivestimento in tessuto o pelle nei colori del campionario. Cuscini decorativi in fibra poliestere, su richiesta.

Cuscino decorativo
35 x 25
Cm (L x H)

Xeni

pp. 100, 101

Massimo Castagna
2018



63 x 78½
71 x 78½
60¼ x 80
76 x 80

Bed in non-deformable foam polyurethane in different density and polyester fibre with wooden inside structure. Available covered by fabric or leather as per sample.

160x200
180x200
153x203
193x203

Letto in poliuretano espanso indeformabile a densità differenziate e fibra poliestere con struttura interna in legno. Disponibile con rivestimento in tessuto o pelle nei colori di campionario.

Twelve C

pp. 100, 101

Massimo Castagna
2018



A 15¼ x 15¼ x 19½
B 15¼ x 15¼ x 21½
C 31½ x 15¼ x 19½

Black open pore lacquered ash night table. 6mm hand decorated craquelé or bright liquorice painted glass top. Hand burnished brass structure.

A 40x40x49
B 40x40x54
C 80x40x49

Comodino in frassino laccato nero poro aperto. Piano in cristallo 6 mm decorato a mano nella finitura craquelé oppure retroverniciato liquirizia brillante. Struttura in ottone brunito a mano.

Coffee table to be placed side by side, with hexagonal conic metal base available in different versions: A: Supermirror bright stainless steel structure with mirrored glass top. B: embossed white lacquered metal structure and bright white painted glass top. C: embossed black lacquered metal structure and bright black painted glass top. D: Brass lacquered metal structure and bright brass top. On castors.

30½ x 10¼
32½ x 14¼
Inches (Ø x H)

Tavolino accostabile con base metallica esagonale conica disponibile in diverse versioni: A: struttura in acciaio inox lucido Supermirror con piano in cristallo specchiato. B: struttura in metallo laccato bianco goffrato e piano in cristallo retroverniciato bianco brillante. C: struttura in metallo laccato nero goffrato e piano in cristallo retroverniciato nero brillante. D: Struttura in metallo verniciato ottone e piano in ottone lucido. Montato su ruote.

77 x 26
82 x 36
Cm (Ø x H)

Coffee table with Supermirror bright stainless steel structure and mirrored glass top. On castors.

35½ x 9¼
42¼ x 11½
Inches (Ø x H)

Tavolino con struttura in acciaio inox lucido Supermirror e piano in cristallo specchiato. Montato su ruote.

90 x 23
107 x 29
Cm (Ø x H)

Basalto

Simone Cagnazzo
2009



Basalto 12

Simone Cagnazzo
2010



Chanel

pp. 46, 47, 68, 69

Studio G&R
2013

A	15¼ × 15¼ × 19¼
B	23¾ × 23¾ ×
C	17¾
D	23¾ × 23¾ × 12
	23¾ × 23¾ × 10
	Inches (W × D × H)

Coffee table with top and structure in hand-brushed aluminium in the colours black, titanium grey or gold colour.

A	40 x 40 x 50
B	60 x 60 x 45
C	60 x 60 x 30
D	60 x 60 x 25
	Cm (L × P × H)

Tavolino con piano e struttura in alluminio spazzolato a mano nei colori nero, titanio o oro.



Coffee table in black (mod. Layer) lacquered solid wood. Smoked Grigio Italia mirrored top. Available also in Antique 1 mirror or Calacatta Vagli Oro marble.

Coffee table	
S	14¾ × 17¾
L	14¾ × 21¾
	Inches (Ø × H)

Marble	
	14¾ × 18¾
	14¾ × 22¾
	Inches (Ø × H)

Tavolino in legno massello laccato nero (mod. Layer). Piano in specchio Grigio Italia. Disponibile anche in specchio Antique 1 oppure marmo Calacatta Vagli Oro.

Tavolo	
S	37 x 45
L	37 x 55
	Cm (Ø × H)

Marmo	
	37 x 46
	37 x 56
	Cm (Ø × H)

Dama

pp. 80, 81, 126, 127, 135

Studio G&R
2015



Connection

pp. 76, 77

Massimo Castagna
2013

Coffee table	
	Ø 39½ × 12
	Ø 51¼ × 12
	Ø 19¾ × 17¾
	Ø 27¾ × 15
	39½ × 39½ × 12
	51¼ × 51¼ × 12
	55¼ × 27¾ × 12
	71 × 30 × 12

Double	
	42¼ × 27¾ × 17¾
	Inches (W × D × H)

Coffee table with 12mm extralight transparent tempered glass. Structure in hand burnished brass. The hand burnished brass finish looks naturally spotted and irregular. Due to this craftmade processing, each product is unique and exclusive.

Tavolino	
	Ø 100 x 30
	Ø 130 x 30
	Ø 50 x 45
	Ø 70 x 38
	100 x 100 x 30
	130 x 130 x 30
	140 x 70 x 30
	180 x 76 x 30

Double	
	107 x 70 x 45
	Cm (L × P × H)

Tavolino in cristallo trasparente extralight temperato 12mm. Struttura in ottone brunito a mano. L'ottone risulta naturalmente macchiato e disomogeneo. Questa lavorazione artigianale conferisce ad ogni pezzo una particolare unicità, rendendolo esclusivo.



Coffee table in black (mod. Layer) lacquered solid wood. Smoked Grigio Italia mirrored top. Available also in Antique 1 mirror or Calacatta Vagli Oro marble.

Coffee table	
S	17¾ × 19¾
L	15 × 25
	Inches (Ø × H)

Marble	
	17¾ × 20¾
	15 × 25¾
	Inches (Ø × H)

Tavolino in legno massello laccato nero (mod. Layer). Piano in specchio Grigio Italia. Disponibile anche in specchio Antique 1 oppure marmo Calacatta Vagli Oro.

Tavolino	
S	45 x 50
L	38 x 63
	Cm (Ø × H)

Marmo	
	45 x 51
	38 x 64
	Cm (Ø × H)

Fante

pp. 20, 21, 80, 81, 76, 101, 117, 118, 126, 127, 142

Studio G&R
2015



Cookies

pp. 7, 11, 46, 47, 49

Pietro Russo
2017

Marble

S	27¾ × 16¾ × 16¾
M	41½ × 24½ × 12
L	47¾ × 28½ × 9¾
	Inches (W × D × H)

Wood

S	27¾ × 16¾ × 16¾
M	41½ × 24½ × 12
L	47¾ × 28½ × 9¾
XL	56¾ × 33½ × 14 ¼
	Inches (W × D × H)

Coffee table with inlaid wooden top with "Tweed" pattern, in Taba Frisé white wood and Tanganika black wood or in Maple Frisé dark grey. Available also with Bianco Statuario and Nero Marquinia marble inlaid top. Black hand brushed anodised aluminium and bright brass structure.

Marmo

S	70 x 42 x 40
M	105 x 62 x 28
L	120 x 72 x 23
	Cm (L × P × H)

Legno

S	70 x 42 x 40
M	105 x 62 x 28
L	120 x 72 x 23
XL	144 x 85 x 36
	Cm (L × P × H)

Tavolino con piano in legno intarsiato con motivo "Tweed", in Taba Frisé bianco e Tanganika nero oppure in Acero Frisé grigio scuro. Disponibile anche con piano in marmo Bianco Statuario e Nero Marquinia intarsiato. Struttura in alluminio spazzolato a mano e anodizzato nero ed ottone lucido.



Coffee table with bright stainless steel structure. 8mm transparent tempered glass top. 8mm transparent or painted tempered glass bottom as per samples in the bright or satin version.

F01	49¼ × 49¼ × 10¾
F02	19¾ × 49¼ × 10¾
F02	30½ × 49¼ × 10¾
F03	31½ × 31½ × 10¾
F03	39½ × 39½ × 10¾
F03	49¼ × 49¼ × 10¾
	Inches (W × D × H)

Tavolino con struttura in acciaio inox lucido. Piano superiore in cristallo trasparente temperato 8mm. Piano inferiore in cristallo trasparente temperato 8mm o retroverniciato nei colori del campionario nella versione brillante o satinata.

F01	125 x 125 x 27
F02	50 x 125 x 27
F02	77 x 125 x 27
F03	80 x 80 x 27
F03	100 x 100 x 27
F03	125 x 125 x 27
	Cm (L × P × H)

Faraday

Mårten Claesson,
Ola Rune,
Eero Koivisto
2007



Fifties

Studio G&R
2013

S 17½ × 16¾ × 18¼
M 15¾ × 15¾ × 18¼
L 29¾ × 21½ × 14¼
Inches (W × D × H)

Coffee table in natural oak or tobacco stained. Top covered by 8mm bevelled painted glass as per samples in the bright or satin version.

S 44 x 42 x 46
M 40 x 40 x 46
L 74 x 54 x 36
Cm (L × P × H)

Tavolino in legno rovere naturale o tinto tabacco e piano rivestito in cristallo 8mm bisellato retroverniciato nei colori del campionario nella versione brillante o satinata.



Coffee table with 10mm transparent extralight tempered glass top. Black open pore or rust lacquered wooden base. Bright brass, hand burnished brass, coppered brass or black chromed metal parts. Available in the combinations as per our list below. See product scheme p. 141.

XS 19¾ × 19
S 19¾ × 22¼
M 31½ × 15¾
L 47¾ × 13
Inches (Ø × H)

Tavolino con piano in cristallo trasparente extralight temperato 10mm. Base in legno laccato nero poro aperto o ruggine. Parti metalliche in ottone lucido, brunito a mano, ramato o cromo nero. Disponibile nelle combinazioni sotto elencate. Vedi schema prodotto p. 141.

XS 50 x 48
S 50 x 56
M 80 x 40
L 120 x 33
Cm (Ø × H)

Haumea

Massimo Castagna
2015

pp. 88, 89, 40, 41, 105, 118



Golden Moon

Massimo Castagna
2015

pp. 68, 69

39½ × 23¾ × 14
39½ × 39½ × 14
51¼ × 27¾ × 14
Inches (W × D × H)

Coffee table with 12mm extralight transparent tempered glass top. Painted glass as per samples in the bright or satin version on request. Plate in bright brass. Structure in hand burnished brass. The hand burnished brass finish looks naturally spotted and irregular. Due to this craftmade processing, each product is unique and exclusive.

100 x 60 x 35
100 x 100 x 35
130 x 70 x 35
Cm (L × P × H)

Tavolino con piano in cristallo trasparente extralight temperato 12mm. A richiesta retroverniciato nei colori del campionario, nella versione brillante o satinata. Piatto in ottone lucido. Struttura in ottone brunito a mano. L'ottone risulta naturalmente macchiato e disomogeneo. Questa lavorazione artigianale conferisce ad ogni pezzo una particolare unicità, rendendolo esclusivo.



Coffee table in black lacquered solid wood, covered by corrugated hand turned wood. Suede top available as per sample. Hand burnished brass base.

S 19½ × 20¼ × 15
M 26 × 27¼ × 13
L 33½ × 35¼ × 11¼
XL 39 × 41 × 9¾
Inches (Ø × H)

Tavolino in legno di massello laccato nero, rivestito con fascia zigrinata a mano. Piano in pelle scamosciata disponibile nei colori del campionario. Base in ottone brunito a mano.

S 49 x 51 x 38
M 66 x 69 x 33
L 85 x 89 x 28
XL 99 x 104 x 23
Cm (Ø × H)

Nori

Studio G&R
2018

pp. 26, 27, 28



Gong

Studio G&R
2017

pp. 87, 88, 89, 105, 106, 109

S 17¾ × 15¾
M 27¾ × 12¼
L 35½ × 9¾
Inches (Ø × H)

Wooden coffee table bevelled and decorated by a handmade exclusive treatment. Available in Autumn Weave or Carbon Black version. Gold leaf base.

S 45 x 40
M 70 x 31
L 90 x 23
Cm (Ø × H)

Tavolino in legno bisellato e decorato con lavorazione manuale ed esclusiva. Disponibile nella versione Autumn Weave oppure Carbon Black. Base in foglia oro.



Coffee table in 8mm tempered glass. Transparent glass top. Transparent, mirrored or painted glass bottom as per samples in the bright or satin version. Stainless steel or burnished metal structure with whitened oak, wengé stained or tobacco stained wooden parts.

31½ × 23¾ × 12
31½ × 31½ × 12
39½ × 23¾ × 12
39½ × 31½ × 12
39½ × 39½ × 12
23¾ × 23¾ × 19¾
31½ × 23¾ × 19¾

Tavolino in cristallo temperato 8mm. Piano superiore in cristallo trasparente. Piano inferiore in cristallo trasparente, specchiato o retroverniciato nei colori del campionario nella versione brillante o satinata. Struttura in acciaio inox o in metallo brunito con parti in legno in rovere sbiancato, tinto wengé o tinto tabacco.

80 x 60 x 30
80 x 80 x 30
100 x 60 x 30
100 x 80 x 30
100 x 100 x 30
60 x 60 x 50
80 x 60 x 50

80 x 80 x 50
120 x 120 x 30
140 x 80 x 30
160 x 60 x 30
Cm (L × P × H)

Nox

Ricardo Bello Dias
2009



Oto Mini

pp. 138

Oscar and
Gabriele Buratti
2015

35½ x 12¾/15
35½ x 16¾/15
39½ x 12¾/15
39½ x 16¾/15
47¼ x 12¾/15
47¼ x 16¾/15
51¼ x 12¾/15

51¼ x 16¾/15
17¾ x 19¾/10
Inches
(Ø x H/thickness)

Coffee table with bevelled and bright painted glass top. Bright lacquered metal structure. Available in the colours black, blue grey and liquorice.



90 x 32/15
90 x 42/15
100 x 32/15
100 x 42/15
120 x 32/15
120 x 42/15
130 x 32/15

130 x 42/15
45 x 50/10
Cm (Ø x H/
thickness)

Tavolino con piano in cristallo bisellato e retroverniciato nella versione brillante. Struttura in metallo verniciato lucido. Disponibile nei colori nero, blu grigio e liquirizia.

Coffee table with Calacatta Vagli Oro marble top or with bright brass plate. Hand burnished brass structure.

	Marble top	Bright brass plate
S	Ø 7½ x 19	
M	Ø 10¼ x 14¼	S 7½ x 19¾
L	Ø 19½ x 16¾	M 10¼ x 15½
XL	31½ x 31½ x 10	L 19½ x 18¾
XXL	Ø 47¼ x 14	Inches (Ø x H)
	Inches (W x D x H)	

Tavolino con piano marmo Calacatta Vagli Oro oppure con ciotola in ottone lucido. Struttura in ottone brunito a mano.

	Piano in marmo	Ciotola ottone
S	Ø 19 x 48	lucido
M	Ø 26 x 36	S 19 x 50
L	Ø 49 x 42	M 26 x 39
XL	80 x 80 x 25	L 49 x 47
XXL	Ø 120 x 35	Cm (Ø x H)
	Cm (L x P x H)	

Twelve

pp. 39, 88, 89, 93, 118,
126, 127, 143, 135, 141

Massimo Castagna
2016



Sir T32 Sir T32 C

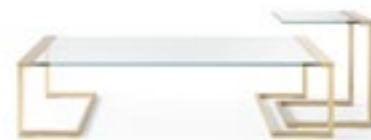
pp. 68, 69

Pierangelo Gallotti
1971

Sir T32
31½ x 31½ x 13
39½ x 39½ x 13
47¼ x 23¾ x 13
47¼ x 47¼ x 13
55¼ x 23¾ x 13
55¼ x 31½ x 13

Sir T32 C
17¾ x 15¾ x 20¾
Inches (W x D x H)

Coffee table with 10mm transparent or smoked Grigio Italia tempered glass top. Chromed metal parts. Bright or satin brass metal parts, on request.



Sir T32
80 x 80 x 33
100 x 100 x 33
120 x 60 x 33
120 x 120 x 33
140 x 60 x 33
140 x 80 x 33

Sir T32 C
45 x 40 x 51
Cm (L x P x H)

Tavolino con piano in cristallo trasparente o Grigio Italia temperato 10mm. Struttura in ottone cromato. A richiesta ottone lucido o satinato.

Coffee table with black brushed lacquered ash top. Available also with hand-decorated craquelé glass top. Black hand brushed anodised aluminium base with bright brass plated details. Possibility to place more tables in different shapes one close to the other getting many configurations as per drawing.

Tavolino con piano in frassino spazzolato laccato nero. Disponibile anche con piano in cristallo decorato a mano nella finitura Craquelé. Base in alluminio spazzolato a mano e anodizzato nero con dettagli ottonati lucidi. Possibilità di accostare più tavoli in forme diverse per ottenere svariate configurazioni a disegno.

Zen

pp. 87, 88, 89, 92

Massimo Castagna
2018



Tetris

pp. 26, 27, 28, 68, 69,
70, 71, 126, 127

Massimo Castagna
2014

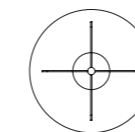
14 x 14 x 10
14 x 14 x 14
14 x 14 x 15¾
14 x 17¾ x 15¾
27¾ x 14 x 14
27¾ x 27¾ x 12
Inches (W x D x H)

Coffee table in 6mm bronze stopsol, extralight transparent or bright black painted tempered glass. Structure in hand burnished brass. The hand burnished brass finish looks naturally spotted and irregular. Due to this craftmade processing, each product is unique and exclusive.



35 x 35 x 25
35 x 35 x 35
35 x 35 x 40
35 x 45 x 40
70 x 35 x 35
70 x 70 x 30
Cm (L x P x H)

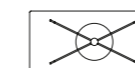
Tavolino in cristallo temperato 6mm stopsol bronzo, trasparente extralight o retroverniciato nero brillante. Struttura in ottone brunito a mano. L'ottone risulta naturalmente macchiato e disomogeneo. Questa lavorazione artigianale conferisce ad ogni pezzo una particolare unicità, rendendolo esclusivo.



A

39½ x 18¾

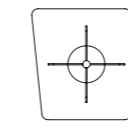
100 x 47



E

41½ x 19¾ x 18¾

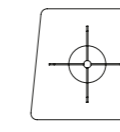
105 x 50 x 47



B

35½ x 35½ x 18¾

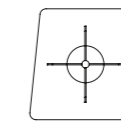
90 x 90 x 47



C

35½ x 35½ x 18¾

90 x 90 x 47



D

35½ x 35½ x 18¾

90 x 90 x 47

Bolle

Massimo Castagna
2014

pp. 20, 94, 105, 141, 142



6 spheres 35½ x 31½ x 45½/ 50½* Inches (W x D x H)	4 spheres 27¾ x 27 x 45½/ 50½* Inches (W x D x H)	Hanging lamp with LED point light. 6 transparent blown glass spheres. Available also version with 4 spheres. Metal parts in hand burnished brass. The hand burnished brass finish looks naturally spotted and irregular. Due to this craftmade processing, each product is unique and exclusive. The height can be customised from a minimum of 85cm (Bolle 6) and 73cm (Bolle 4) to a maximum of 600cm (including lights).
	* Including lights	

6 sfere 90 x 80 x 115/128* Cm (L x P x H)	4 sfere 70 x 68 x 115/128* Cm (L x P x H)	Lampada a sospensione a LED. 6 sfere in cristallo trasparente soffiato a bocca. Disponibile anche nella versione con 4 sfere. Parti metalliche in ottone brunito a mano. L'ottone risulta naturalmente macchiato e disomogeneo. Questa lavorazione artigianale conferisce ad ogni pezzo una particolare unicità, rendendolo esclusivo. L'altezza può essere realizzata a misura, da un minimo di 85cm (Bolle 6) e 73cm (Bolle 4) ad un massimo di 600cm (incluso corpo luminoso).
	* Incluso corpo luminoso	

Bolle Sola

Massimo Castagna
2015

pp. 16, 25, 34, 35, 36,
37, 76



S 8 x 20 L 10 x 24½ Inches (Ø x H)	Hanging lamp with LED point light. Transparent blown glass sphere. Metal parts in hand burnished brass. The hand burnished brass finish looks naturally spotted and irregular. Due to this craftmade processing, each product is unique and exclusive. Supplied with cable 4mt long.
--	---

S 20 x 50,5 L 25 x 62 Cm (Ø x H)	Lampada a sospensione a luce LED. Sfera in cristallo trasparente soffiato a bocca. Parti metalliche in ottone brunito a mano. L'ottone risulta naturalmente macchiato e disomogeneo. Questa lavorazione artigianale conferisce ad ogni pezzo una particolare unicità, rendendolo esclusivo. In dotazione cavo da 4mt.
--	---

Single table lamp with LED point light. Transparent blown glass sphere. Metal parts in hand burnished brass. The hand burnished brass finish looks naturally spotted and irregular. Due to this craftmade processing, each product is unique and exclusive.

10¼ x 11¼
Inches (Ø x H)

Lampada da tavolo singola a luce LED. Sfera in cristallo trasparente soffiato a bocca. Parti metalliche in ottone brunito a mano. L'ottone risulta naturalmente macchiato e disomogeneo. Questa lavorazione artigianale conferisce ad ogni pezzo una particolare unicità, rendendolo esclusivo.

26 x 28
Cm (Ø x H)

Table lamp with LED point light. Transparent blown glass spheres. Metal Parts in hand burnished brass. The hand burnished brass finish looks naturally spotted and irregular. Due to this craftmade processing, each product is unique and exclusive.

23 x 20½ x 17½
Inches (W x D x H)

Lampada da tavolo a luce LED. Sfere in cristallo trasparente soffiato a bocca. Parti metalliche in ottone brunito a mano. L'ottone risulta naturalmente macchiato e disomogeneo. Questa lavorazione artigianale conferisce ad ogni pezzo una particolare unicità, rendendolo esclusivo.

58 x 52 x 44
Cm (L x P x H)

Hanging lamp with LED point light. 8 transparent blown glass spheres. Metal parts in hand burnished brass. The hand burnished brass finish looks naturally spotted and irregular. Supplied with cable 4mt long.

33½ x 29¼ x 71
Inches (W x D x H)

Lampada a sospensione a luce LED. Composta da 8 sfere in cristallo trasparente soffiato a bocca. Parti metalliche in ottone brunito a mano. L'ottone risulta naturalmente macchiato e disomogeneo. In dotazione cavo di 4mt.

85 x 75 x 180
Cm (L x P x H)

Bolle Tavolo 1

Massimo Castagna
2015

pp. 67, 68, 69, 72, 106,
109, 121



Bolle Tavolo 3

Massimo Castagna
2015

pp. 78, 79, 110, 111, 113



Bolle Tela

Massimo Castagna
2015

pp. 7, 8, 9



Bolle Terra

pp. 101, 103

Massimo Castagna
2015

28½ x 27 x 65¼
Inches (W x D x H)

Floor lamp with LED point light. Transparent blown glass spheres. Metal parts in hand burnished brass. The hand burnished brass finish looks naturally spotted and irregular. Due to this craftmade processing, each product is unique and exclusive.

Hanging lamp with LED point light. Handshaped glass cylinders. Hand burnished metal parts. The height can be customised from a minimum of 115cm to a maximum of 450cm.

39½ x 45½
63 x 45½
Inches (Ø x H)

Epsilon

pp. 15, 65, 75, 126, 127,
150, 151, 152

Massimo Castagna
2016



72 x 68 x 167
Cm (L x P x H)

Lampada da terra a luce LED. Sfere in cristallo trasparente soffiato a bocca. Parti metalliche in ottone brunito a mano. L'ottone risulta naturalmente macchiato e disomogeneo. Questa lavorazione artigianale conferisce ad ogni pezzo una particolare unicità, rendendolo esclusivo.

Lampada a sospensione a luce LED. Cilindri in cristallo sagomato a mano. Parti metalliche in ottone brunito a mano. L'altezza può essere realizzata a misura da un minimo di 115cm ad un massimo di 450cm.

100 x 115
160 x 115
Cm (Ø x H)



Diantha

pp. 54, 116, 117, 130, 131

Massimo Castagna
2017

DH 67 x 43½ x 43½
DVS 48½ x 45½ x 47¼
DVL 60¼ x 54 x 93½
Inches (W x D x H)

Hanging lamp with LED light (9 Watt). Mouth blown and painted glass. Bronzed black metal parts.

Hanging lamp with LED light (4 Watt). Handshaped glass cylinders. Bright, satin, hand burnished, black chromed or coppered brass metal parts. Supplied with 4mt long cable.

S 2½ x 14¼
L 3¼ x 18¼
Inches (Ø x H)

Epsilon Sola

pp. 111, 113, 114, 115, 126,
127

Massimo Castagna
2017



DH 170 x 110 x 110
DVS 123 x 115 x 120
DVL 153 x 137 x 237
Cm (L x P x H)

Lampada a sospensione a LED (9 Watt). Cristallo soffiato a bocca e verniciato. Parti metalliche in nero bronzato.

Lampada a sospensione a LED (4 Watt). Cilindri in cristallo sagomato a mano. Parti metalliche in ottone lucido, satinato, brunito a mano, cromato nero o ramato. In dotazione cavo da 4m.

S 6 x 36
L 8 x 46
Cm (Ø x H)



Diantha Terra

pp. 101, 103

Massimo Castagna
2018

31½ x 35½ x 75
Inches (W x D x H)

Floor lamp with LED light (6 Watt). Mouth blown and painted glass. Bronzed black metal parts.

Hanging lamp with LED light with black bronzed painted structure and bright, satin, hand-burnished and black chrome brass parts.

14 x 70¼
14 x 82¼
14 x 98½
14 x 110¼
14 x 126
Inches (Ø x H)

Eris

pp. 87, 88, 89, 90, 105

Massimo Castagna
2017



80 x 90 x 190
Cm (L x P x H)

Lampada da terra a Led (6 Watt). Cristallo soffiato a bocca e verniciato. Parti metalliche in nero bronzato.

Lampada a sospensione a LED con struttura verniciata nero bronzato e fasce in ottone lucido, satinato, brunito a mano e cromo nero.

35 x 180
35 x 210
35 x 250
35 x 280
35 x 320
Cm (Ø x H)



Lanterna

pp. 13, 15

Massimo Castagna
2017

4½ x 5¼ x 20¼
Inches (W x D x H)

Wall light with black lacquered metal structure covered by extralight screenprinted glass in two colours, white and black. LED light (30 Watt).

11 x 13 x 51h
Cm (L x P x H)

Applique con struttura in metallo verniciato nero rivestita in cristallo extralight serigrafato in due colori, bianco e nero. Lampada a LED (30 Watt).



Narghilè

pp. 145, 146, 147, 149

Massimo Castagna
2018

Ø 12 x 38¼

Canop
14¼ x 14¼ (single)
28½ x 28½ (4 pieces)
28½ x 42¼ (6 pieces)

Hanging lamp with LED light (4 Watt). Handshaped glass cylinders. Bright chromed brass metal parts. Supplied with cable 4mt long.

Ø 30 x 98h

Rosone
36 x 36 (singola)
72 x 72 (4 pezzi)
72x108h (6 pezzi)

Lampada a sospensione a luce LED (4 Watt). Cilindri in cristallo sagomato a mano. Parti metalliche in ottone cromato lucido. In dotazione cavo di 4mt.



Ori

pp. 60, 62, 63, 101

Massimo Castagna
2017

7¼ x 2 x 19
Inches (W x D x H)

Wall light in satin brass outside and bright brass inside. LED light (11 Watt).

18 x 5 x 48
Cm (L x P x H)

Applique in ottone satinato all'esterno e lucido all'interno. Lampada a LED (11 Watt).



Trolley in 10mm transparent glass. Painted glass as per samples in the bright or satin version on request. Bright or satin stainless steel metal parts. Handles in whitened oak, wengé stained or tobacco stained.

33¼ x 19 x 32½
Inches (W x D x H)

Carrello in cristallo trasparente 10mm. Su richiesta cristallo retroverniciato nei colori del campionario nella versione brillante o satinata. Struttura in acciaio inox lucido o satinato. Maniglie in rovere sbiancato, tinto wengé o tinto tabacco.

84 x 48 x 82
Cm (L x P x H)

Mister

Andreas Weber
1998



Trolley in 8mm transparent glass. Painted glass as per samples in the bright or satin version on request. Chromed brass frame. Bright or satin brass frame on request.

T52/1 32½ x 15 x 27¼
T52/2 38 x 18¼ x 27¼
T53 Ø 23¼ x 27¼
Inches (W x D x H)

Carrello in cristallo trasparente 8mm. Su richiesta cristallo retroverniciato nei colori del campionario nella versione brillante o satinata. Struttura in ottone cromato. A richiesta ottone lucido o satinato.

T52/1 82 x 38 x 69
T52/2 96 x 46 x 69
T53 Ø 60 x 69
Cm (L x P x H)

Riki

pp. 16, 53, 84, 97

Pierangelo Gallotti
1971



Black & White Beat

Pietro Russo
2016

pp. 53



56 x 56
71¼ x 71¼
Inches (W x H)

Mirror bevelled and polished by hand, bright black painted glass inserts. Made of 42 single sections. Special limited edition.

142 x 142
182 x 182
Cm (L x H)

Specchio bisellato e lucidato a mano, inserti in cristallo retroverniciato nero brillante. Composto da 42 sezioni singole. Special limited edition.

Changes 09

Patricia Urquiola
2009



A 5 x 4 x 67
B 10 x 4 x 67
C 19¼ x 2 x 67
Inches (W x D x H)

Modular system of concave (A and B) and regular (C) mirrors. White lacquered wooden frame (max thickness 10cm). They can be placed in a vertical or horizontal position both upwards and downwards.

A 12,5 x 10 x 170
B 25 x 10 x 170
C 50 x 5 x 170
Cm (L x P x H)

Sistema componibile di specchi concavi (A e B) e regolari (C). Cornice in legno laccato bianco (spessore max 10cm). Posizionabili verticalmente o orizzontalmente in entrambe le direzioni.

Screen with satin brass lacquered wooden and metal structure. Sides covered by extralight mirror and fabric. Bases in marble Calacatta Vagli Oro. Covered by customer's fabric on request.

53¼ x 6 x 85½
Inches (W x D x H)

Paravento con struttura in legno e metallo laccato ottone satinato. Lati rivestiti in specchio extralight e tessuto. Basi in marmo Calacatta Vagli Oro. A richiesta con tessuto cliente.

135 x 15 x 217
Cm (L x P x H)

Chloé

Studio G&R
2016

pp. 65



Cubista

Pietro Russo
2018

pp. 50, 51



Mirror bevelled and polished by hand, bright black painted glass inserts. Made of 17 single sections.

27½ x 45¼
Inches (W x D x H)

Specchio bisellato e lucidato a mano, inserti in cristallo retroverniciato nero brillante. Composto da 17 sezioni singole.

69,5 x 116
Cm (L x H)

Hand polished mirror with octagonal central part and frame composed of 40 inclined mirrors on different levels.

47¼ x 2½
59¼ x 2½
Inches (Ø x H)

Specchio naturale molato a mano con parte centrale ottagonale e cornice composta da 40 specchi inclinati su piani diversi.

120 x 6
150 x 6
Cm (Ø x H)

Dream

Ricardo Bello Dias
2007



Flabello

Lanzavecchia + Wai
2017

pp. 13, 57, 58



S 12¾ × 4 × 12
M 15¾ × 6 × 15
L 19¾ × 4 × 10
Inches (W × D × H)

Table mirror. Hand silver-plated and antiqued.
Black (mod. Layer) open pore lacquered ash
wooden base and bright brass.

S 32 x 10 x 30
M 40 x 15 x 38
L 50 x 10 x 25
Cm (L × P × H)

Specchio da tavolo, argentato ed anticato
a mano. Base in frassino tinto nero poro aperto
(mod. Layer) e ottone lucido.

System of extralight or smoked Grigio Italia
bevelled mirrors fixed on panels on different tilts.
Available single or as per standard compositions.
Chromed or burnished metal joint structure.

Sistema di specchi extralight o Grigio Italia
molati a bisello montati su pannelli a diverse
inclinazioni. Disponibili singolarmente o
in composizioni predefinite. Strutture di
collegamento in metallo cromato o brunito.

Leaf

Ricardo Bello Dias
2012



Gemma

Studio G&R
2013

pp. 85

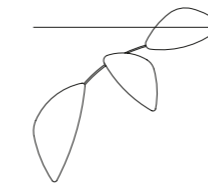


23¾ × 3¼ × 23¾
31½ × 2 × 23¾
47¼ × 1 × 14
Inches (W × D × H)

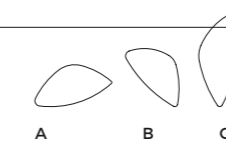
Extralight or smoked
Grigio Italia mirror with 2.5cm bevel.

60 x 8 x 60
80 x 5 x 60
120 x 2 x 35
Cm (L × P × H)

Specchio extralight
o Grigio Italia con bisello 2.5cm.



Composition 1
84¾ × 78¾
Inches (W × H)



A 36¼ × 17¾
B 34¾ × 15¾
C 48¾ × 19¾

Composizione 1
215 x 200
Cm (L × H)

A 92 x 45
B 88 x 40
C 122 x 50



Composition 2
71 × 92¾
Inches (W × H)



D 45½ × 12
E 21¾ × 8½
F 45½ × 12

Composizione 2
180 x 235
Cm (L × H)

D 115 x 30
E 55 x 21
F 115 x 30

Keplero

Andrea Bassoli
2002



10¼ × 78¾
Inches (W × H)

Hand polished mirror. It can be placed both in
a horizontal or vertical position.

26 x 200
Cm (L × H)

Specchio naturale molato a mano. Posizionabile
sia in orizzontale che in verticale.

Mirror made of superimposed bevelled
mirrors. Frontal mirror with bevelled edge
3.5cm.

Ø 39¾
Ø 47¼
Ø 55¼
39¾ × 39¾
47¼ × 47¼

55¼ × 55¼
19¾ × 78¾
31½ × 78¾
Inches (W × H)

Specchio composto da cristalli sovrapposti
molati. Specchio frontale con bisello 3,5cm.

Ø 100
Ø 120
Ø 140
100 x 100
120 x 120

140 x 140
50 x 200
80 x 200
Cm (L × H)

Lebel 10

Studio G&R
2010



Niagara
pp. 36, 37

Pierangelo Gallotti
1987

Ø 31½
Ø 39½
Ø 47¼
31½ x 31½
39½ x 39½
Inches (W x H)

Superimposed bevelled mirrors with central irregular bevelled zone. It can be placed both in a horizontal or vertical position.

Ø 80
Ø 100
Ø 120
80 x 80
100 x 100
Cm (L x H)

Specchio composto da cristalli sovrapposti molati. Fascia centrale irregolare molata a mano. Posizionabile sia in orizzontale che in verticale.

Extralight mirror with frame (thickness 5cm) covered by suede as per sample.

31½ x 31½
45½ x 59¼
15¾ x 71
Inches (W x H)

Specchio extralight con cornice (profondità 5cm) rivestita in pelle scamosciata nei colori del campionario.

80 x 80
115 x 150
40 x 180
Cm (L x H)

Soft
pp. 117

Studio G&R
2014



Odette
pp. 19

Studio G&R
2015

S Ø 19¾
M 23 x 14¼
M 30 x 18¾
L 23¾ x 23¾
L 31½ x 31½
XL 12 x 55¼
Inches (W x H)

Mirror with bright brass metal decorative detail, which can be placed all over the perimeter, at discretion of the client. Available also in extralight mirror, Antique 1 or Antique 2 mirror.

S Ø 50
M 58 x 36
M 76 x 47
L 60 x 60
L 80 x 80
XL 30 x 140
Cm (L x H)

Specchio con particolare decorativo in metallo ottonato lucido posizionabile a discrezione lungo il perimetro. Disponibile in extralight, Antique 1 o Antique 2.

Mirror with 4cm bevelled central part.

Ø 59¼
Ø 65
Inches (W x H)

Specchio con parte centrale molata a bisello 4cm.

Ø 150
Ø 165
Cm (L x H)

Sole
pp. 7, 39

Studio G&R
1975



Selene Mirror
pp. 154, 155

Pietro Russo
2016

15¾ x 25¾
Inches (Ø x H)

Vanity mirror with Led light. 6mm bevelled extralight mirror. Satin brass metal parts and Black Marquinia marble base.

40 x 65
Cm (Ø x H)

Specchio vanity da tavolo dotato di luce led. Specchio extralight in 6mm bisellato. Parti metalliche in ottone satinato e base in marmo Nero Marquinia.

Hand polished mirror. Metal back panel. Possibility to fix it to the wall in different positions.

S 30¾ x 18¼
M 35½ x 22½
L 57¼ x 39
Inches (W x H)

Specchio naturale molato a mano. Supporto in lamiera metallica verniciata a fuoco. Fissaggio a parete in molteplici posizioni.

S 78 x 46
M 90 x 57
L 145 x 99
Cm (L x H)

Spring

Ricardo Bello Dias
2006



Zed

Ricardo Bello Dias
2006



12 x 15½ x 69
Inches (W x D x H)

Freestanding mirror with bent dark grey metal structure.

30 x 39 x 175
Cm (L x P x H)

Specchio autoportante con struttura in metallo piegato e verniciato a fuoco, color grigio umbro.

Zeiss Mirror

pp. 118

Luca Nichetto
2009



S 31½ x 2½ x 30¾
M 41 x 2½ x 36¼
L 61½ x 2½ x 59½
Inches (W x D x H)

Hand polished and bevelled extralight mirror in three different shapes and sizes. White lacquered wooden frame (thickness 5cm) or lacquered with fabric touch effect in the colours canapa, sand and chestnut.

S 80 x 6 x 78
M 104 x 6 x 92
L 156 x 6 x 151
Cm (L x P x H)

Specchio extralight molato e bisellato a mano, in tre diverse forme e dimensioni. Cornice in legno (spessore 5cm) laccato bianco o effetto tessuto nei colori canapa, sabbia e castagna.

Console with 10mm painted glass top, as per samples in the bright version. Satin painted glass, on request. Wooden base covered by painted glass.

47¼ x 17½ x 29¼
59¼ x 17½ x 29¼
71 x 17½ x 29¼
Inches (W x D x H)

Consolle con piano in cristallo 10mm retroverniato nei colori del campionario nella versione brillante. Su richiesta cristallo retroverniato satinato. Basi in legno rivestito in cristallo retroverniato.

120 x 44 x 74
150 x 44 x 74
180 x 44 x 74
Cm (L x P x H)

Dolm Console

Oscar and Gabriele
Buratti
2013



Console with black (mod. Layer) open pore lacquered ash drawers. Satin brass and satin brass lacquered aluminium details. 6mm bright liquorice painted tempered glass top.

47¼ x 14¼ x 32¾
55¼ x 14¼ x 32¾
Inches (W x D x H)

Consolle con cassetti in frassino tinto nero poro aperto (mod. Layer). Dettagli in ottone satinato e alluminio verniciato ottone satinato. Top in cristallo 6mm temperato retroverniato liquirizia brillante.

120 x 36 x 83
140 x 36 x 83
Cm (L x P x H)

Tama Console

pp. 25, 37

Carlo Colombo
2016



Grace

Carlo Colombo
2014



39½ × 23¾ × 54½
Inches (W × D × H)

Vanity desk in tobacco stained ash. Natural ash, on request. Drawer with wooden front, available also covered by painted glass as per samples in the bright or satin version. Reclining mirror.

100 x 60 x 138
Cm (L × P × H)

Scrittoio-vanity in frassino tinto tabacco. Su richiesta frassino naturale. Cassetto con frontale in legno, disponibile anche rivestito in cristallo retroverniciato nei colori del campionario nella versione brillante o satinata. Specchio reclinabile.

Selene

pp. 65, 154, 155

Pietro Russo
2016



51¼ × 19¾ × 30¾
Inches (W × D × H)

Vanity desk in Taba Frisé white wood and Tanganika black wood. Satin brass metal parts. Bevelled mirror with Nero Marquina marble base. With LED light.

130 x 50 x 78
Cm (L × P × H)

Scrittoio-vanity in Taba Frisé bianco e Tanganika nero. Parti metalliche in ottone satinato. Specchio bisellato con base in marmo Nero Marquina, dotato di luce a LED.

Desk in black (mod. Layer) open pore lacquered solid ash with hand-knurled border part. Calacatta Vagli Oro marble or liquorice painted glass top, in the bright or satin version. Supplied with two drawers with suede Grey 020 bottom. Bright brass metal parts.

Small boxes in metal covered by suede Grey 020, available on request.

51¼ × 21¾ × 33¼

Small boxes
5¼ × 5¼ × 1¾
Inches (W × D × H)

Scrittoio in massello di frassino tinto nero poro aperto (mod. Layer) con fascia zigrinata a mano. Piano in marmo Calacatta Vagli Oro oppure in cristallo retroverniciato liquirizia nella versione brillante o satinata. Dotato di due cassetti con fondo in pelle scamosciata Grey 020. Parti metalliche in ottone lucido. Vaschette porta oggetti in metallo rivestito in pelle scamosciata Grey 020, disponibili su richiesta.

130 x 55 x 84

Vaschette
portaoggetti
13 x 13 x 4
Cm (L × P × H)

Desk with flap door in black (mod. Layer) open pore lacquered ash. Satin brass and satin brass lacquered aluminium details. 6mm bright liquorice painted tempered glass top and inside back. Rhomboidal engraved pattern on the inside glass back. Inside part of flap door and small boxes covered by suede Grey 058.

47¼ × 14¼ × 43½
55¼ × 14¼ × 43½

Small boxes
5¼ × 4 × 1¾
Inches (W × D × H)

Scrittoio a ribalta in frassino tinto nero poro aperto (mod. Layer). Dettagli in ottone satinato e alluminio verniciato ottone satinato. Top e schienale interno in cristallo 6mm temperato retroverniciato liquirizia brillante. Sul cristallo interno incisione a rombi. Interno ribalta e scatole portaoggetti rivestite in pelle scamosciata Grey 058.

120 x 36 x 110
140 x 36 x 110

Vaschette
portaoggetti
13 x 10 x 4
Cm (L × P × H)

Vanity wooden desk covered by painted glass, as per samples in the bright or satin version. Rotating double face mirror diam. 50cm. Magnifying mirrored insert on request. Chestnut with fabric touch effect lacquered drawers. Burnished metal structure. Small boxes in metal covered by suede Sand 012.

49 × 23¾ × 34
56¾ × 23¾ × 34

Small boxes
5¼ × 4 × 1¾
Inches (W × D × H)

Scrittoio-vanity in legno rivestito in cristallo retroverniciato nei colori del campionario, nella versione brillante o satinata. Specchio bifacciale diam. 50cm, orientabile. Su richiesta inserto con specchio ingranditore. Cassetti in legno laccato effetto tessuto color castagna. Struttura in metallo brunito. Vaschette porta oggetti in metallo rivestito in pelle scamosciata Sand 012.

124 x 60 x 86
144 x 60 x 86

Vaschette
portaoggetti
13 x 10 x 4
Cm (L × P × H)

Soho

Carlo Colombo
2017



Tama
Secrétaire

Carlo Colombo
2016

pp. 102, 103



Venere

pp. 139

Carlo Colombo
2013



Zen

pp. 122, 123

Massimo Castagna
2017

78¾ x 28¾ x 29½
86¾ x 28¾ x 29½
108½ x 28¾ x
29½
108½ x 42¼ x 29½
Inches (W x D x H)

Desk with ash and rosewood top. Black and hand brushed anodised aluminium base with bright brass details.

200 x 73 x 74,5
220 x 73 x 74,5
275 x 73 x 74,5
275 x 107 x 74,5
Cm (L x P x H)

Scrivania con piano in palissandro e frassino. Base in alluminio spazzolato a mano e anodizzato nero con dettagli ottonati lucidi.



Modular system of wooden elements covered by painted glass as per samples in the bright or satin version or in extralight mirror. Smoked Grigio Italia mirror for suspended version and for the units U06, U06R and U06V only. Available as freestanding version with 12mm tempered extralight transparent glass side or suspended version. For compositions as a room divider is available a painted glass back. Bright anodised aluminium metal parts. The inside of Air Unit is made of leather effect laminated wood.

Please refer to our website for size information and multiple available options. www.gallottiradice.it

Sistema modulare di contenitori in legno rivestito in cristallo retroverniciato nei colori del campionario nella versione brillante o satinata oppure in specchio extralight. Specchio Grigio Italia solo per versione pensile e per i mobili U06, U06R e U06V. Disponibile con spalla portante in cristallo trasparente extralight temperato 12mm oppure nella versione pensile. Per composizioni a centrostanza è previsto lo schienale in cristallo retroverniciato. Parti metalliche in alluminio anodizzato brill. L'interno del mobile Air è in laminato effetto pelle.

Per conoscere le molteplici varianti e le dimensioni disponibili consultare il nostro sito web. www.gallottiradice.it

Modular system of superimposed wooden elements covered by painted glass as per samples, in the bright or satin version or in extralight mirror or smoked Grigio Italia mirror. Base and spacers in leather effect laminated wood. Bright anodised aluminium metal parts. For compositions as room divider, is available a painted glass back. The inside of Air Up is made of leather effect laminated wood.

Please refer to our website for size information and multiple available options. www.gallottiradice.it

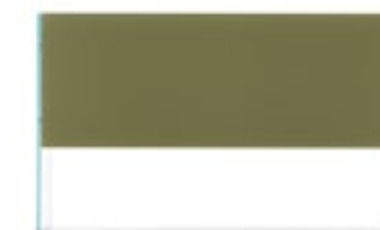
Sistema di mobili contenitori sovrapposti in legno rivestito in cristallo retroverniciato nei colori del campionario, nella versione brillante o satinata oppure in specchio extralight o specchio Grigio Italia. Base e distanziatori in legno laminato effetto pelle. Parti metalliche in alluminio anodizzato brill. Per composizioni a centrostanza è previsto lo schienale in cristallo retroverniciato. L'interno del mobile Air Up è in laminato effetto pelle.

Per conoscere le molteplici varianti e le dimensioni disponibili consultare il nostro sito web. www.gallottiradice.it

Air Unit

pp. 16

Pinuccio Borgonovo
2008



Air Up

pp. 79

Pinuccio Borgonovo
2010



Athus

pp. 7, 12, 13, 15, 98, 99,
110, 111, 113

Oscar e Gabriele
Buratti
2017

98½ × 23 × 29¾
49¾ × 23 × 53¾
118¾ × 23 × 19
Inches (W × D × H)

Sideboard in black open pore lacquered ash. Patinated bronze lacquered metal details. Bright black painted glass top. Available also in Grey Stardust or Sahara Noir marble top. Supplied with 10mm tempered extralight inside glass shelf. Push-pull drawers with suede bottom.

300 x 58 x 48h
250 x 58 x 75h
125 x 55 x 136h
Cm (L × P × H)

Madia in frassino laccato nero poro aperto. Dettagli in metallo verniciato bronzo patinato. Top in cristallo retroverniciato nero brillante. Disponibile anche in marmo Stardust Grigio o Sahara Noir. Dotata di ripiano interno in cristallo extralight 10mm temperato. Cassetti con fondo in pelle scamosciata e apertura push and pull.



Wooden sideboard covered by 6mm tempered glass decorated by hand with an exclusive treatment. Patinated bronze lacquered base and inside part. Supplied with 8mm extralight tempered glass shelf and mirrored inside glass back. Collection in numbered edition.

75 × 18¼ × 30
Inches (W × D × H)

Madia in legno rivestita in cristallo temperato 6mm decorato con lavorazione manuale ed esclusiva. Basamento ed interno del mobile laccato bronzo patinato. Dotata di ripiano in cristallo extralight 8mm temperato e schienale interno specchiato. Collezione in edizione numerata.

190 x 46 x 76
Cm (L × P × H)

Misty Venice

pp. 60, 61

Artefatto
2017



Black open pore lacquered ash wooden bar unit covered by 6mm tempered glass decorated by hand with an exclusive treatment. Patinated bronze lacquered base. Supplied with inside shelves and mirrored glass back. Small boxes in metal covered by suede Sand 06. With light. Collection in numbered edition.

39½ × 16¼ × 61¼
Inches (W × H)

Mobile bar in frassino laccato nero poro aperto, rivestito in cristallo temperato 6mm e decorato con lavorazione manuale ed esclusiva. Basamento laccato bronzo patinato. Dotato di ripiani interni e schienale specchiato. Vaschette porta oggetti in metallo rivestite in pelle scamosciata Sand 06. Luce interna. Collezione in edizione numerata.

100 x 41 x 155
Cm (L × H)

Misty Venice Bar

pp. 136, 137

Artefatto
2018



Diedro

pp. 54, 55, 57

Pietro Russo
2017

51¾ × 18¾ × 60¼
72½ × 21¾ × 32¾
120¼ × 21¾ × 32¾
Inches (W × D × H)

Sideboard in Taba Frisé white wood and Tanganika black wood with satin brass lacquered metal structure or in ash and rosewood with black lacquered structure. Supplied with 8mm tempered extralight glass shelf and mirrored inside glass back.

131 x 47 x 153
184 x 55 x 83
305 x 55 x 83
Cm (L × P × H)

Madia in Taba Frisé bianco e Tanganika nero con struttura in metallo laccato ottone satinato oppure in frassino e palissandro con struttura nero bronzato. Dotata di ripiano in cristallo extralight 8mm temperato e schienale interno specchiato.



Sideboard in 8mm tempered glass covered by gold leaf applied by hand with an exclusive treatment. After this process the unit has an irregular and unique finish outside and a gold finish inside. Patinated bronze lacquered metal structure. Collection in numbered edition.

64 × 20½ × 28
64 × 20½ × 49¾
79¾ × 20½ × 28
Inches (W × D × H)

Madia in cristallo temperato 8mm, rivestito in foglia oro applicata con lavorazione manuale ed esclusiva. Grazie a questo trattamento, il contenitore assume una colorazione disomogenea e unica all'esterno e mantiene la finitura dorata all'interno. Struttura in metallo verniciato bronzo patinato. Collezione in edizione numerata.

162 x 52 x 71
162 x 52 x 126
202 x 52 x 71
Cm (L × P × H)

Pandora

pp. 32, 33, 146, 149,
150, 151

Pinuccio Borgonovo
2014



Pandora Craquelé

pp. 34, 36, 37

Pinuccio Borghonovo
2016



64 x 20½ x 28
64 x 20½ x 49¾
79¾ x 20½ x 28
Inches (W x D x H)

Sideboard in 8mm tempered glass decorated by hand with an exclusive treatment. Bright bronze painted inside. Patinated bronze lacquered metal structure and wooden base. Collection in numbered edition.

162 x 52 x 71
162 x 52 x 126
202 x 52 x 71
Cm (L x P x H)

Madia in cristallo temperato 8mm, decorato con lavorazione manuale ed esclusiva. Interno retroverniciato bronzo brillante. Struttura in metallo e base in legno verniciato bronzo patinato. Collezione in edizione numerata.

Shelving unit with satin Zebrino Turco marble top. Patinated bronze lacquered structure and bottom shelf.

63 x 19¾ x 19¾
78¾ x 19¾ x 19¾
94½ x 19¾ x 19¾
110¼ x 19¾ x 19¾
126 x 19¾ x 19¾
Inches (W x D x H)

Mobile a ripiani con top in marmo Zebrino Turco satinato. Struttura e piano inferiore laccati bronzo patinato.

160 x 50 x 50
200 x 50 x 50
240 x 50 x 50
280 x 50 x 50
320 x 50 x 50
Cm (L x P x H)

Pandora Shelf

Pinuccio Borghonovo
2017



Pandora Decò

pp. 94, 96, 97

Pinuccio Borghonovo
2015



64 x 20½ x 28
64 x 20½ x 49¾
79¾ x 20½ x 28
Inches (W x D x H)

Sideboard in 8mm tempered glass decorated by hand with an exclusive treatment. Bright black painted inside. Patinated bronze lacquered metal structure and wooden base. Collection in numbered edition.

162 x 52 x 71
162 x 52 x 126
202 x 52 x 71
Cm (L x P x H)

Madia in cristallo temperato 8mm, decorato con lavorazione manuale ed esclusiva. Interno retroverniciato nero brillante. Struttura in metallo e base in legno verniciato bronzo patinato. Collezione in edizione numerata.

Black (mod. Layer) open pore lacquered ash wooden bar unit and satin brass details. Inside covered by engraved smoked Grigio Italia mirror. With light.

27¾ x 15¾ x 55¾
Inches (W x D x H)

Mobile bar in frassino tinto nero poro aperto (mod. Layer) e dettagli in ottone satinato. Interno rivestito in specchio Grigio Italia inciso. Luce interna.

70 x 40 x 141,5
Cm (L x P x H)

Tama

pp. 118, 119, 120, 121

Carlo Colombo
2015



Pandora Light

pp. 72, 73

Pinuccio Borghonovo
2016



64 x 20½ x 28
64 x 20½ x 49¾
79¾ x 20½ x 28
Inches (W x D x H)

Sideboard in 8mm extralight transparent tempered glass painted in patinated bronze. Patinated bronze lacquered metal structure and handles. Wooden bottom shelf covered by gold leaf or Emperador Brown satin marble.

162 x 52 x 71
162 x 52 x 126
202 x 52 x 71
Cm (L x P x H)

Madia in cristallo trasparente extralight temperato 8mm verniciata in bronzo patinato. Struttura e maniglie in metallo verniciato bronzo patinato. Piano inferiore in legno rivestito in foglia oro oppure in marmo Emperador Brown satinato.

Sideboard in black (mod. Layer) open pore lacquered ash. Satin brass and satin brass lacquered aluminium details. 6mm bright liquorice painted tempered glass top and inside back. Rhomboidal engraved pattern on the inside glass back. Supplied with smoked Grigio Italia glass shelf and wooden tray.

94½ x 19 x 28½
Inches (W x D x H)

Madia in frassino tinto nero poro aperto (mod. Layer). Dettagli in ottone satinato e alluminio verniciato ottone satinato. Top e schienale interno in cristallo 6mm temperato retroverniciato liquirizia brillante. Sul cristallo interno incisione a rombi. Dotato di ripiano in cristallo Grigio Italia e vassoio portaoggetti in legno.

240 x 48 x 72
Cm (L x P x H)

Tama Crédence

pp. 75, 126, 127, 128, 129

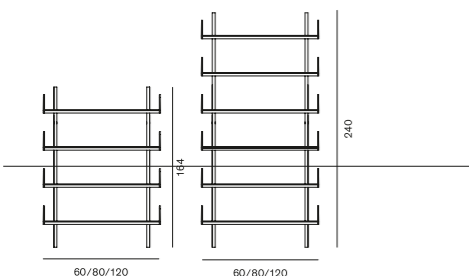
Carlo Colombo
2016



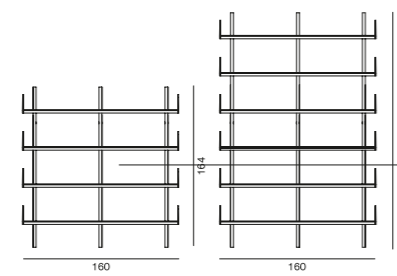
Brera

Massimo Castagna
2016

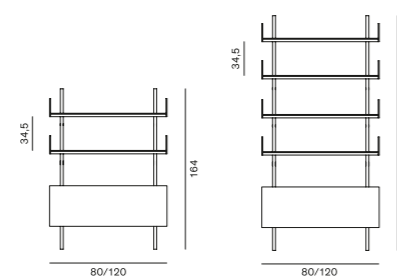
pp. 26, 27, 29, 36, 37,
105, 130, 131



Version with shelves	Versione a ripiani
23¼ × 10 × 64¾	60 x 25 x 164
31½ × 10 × 64¾	80 x 25 x 164
47¼ × 10 × 64	120 x 25 x 164
23¼ × 10 × 94½	60 x 25 x 240
31½ × 10 × 94½	80 x 25 x 240
47¼ × 10 × 94½	120 x 25 x 240
Inches (W × D × H)	Cm (L × P × H)



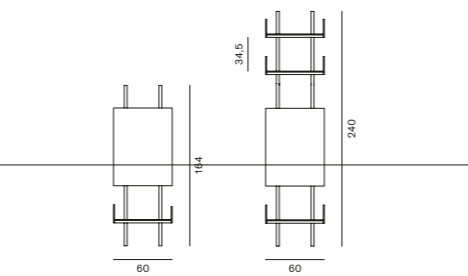
Version with shelves	Versione a ripiani
63 × 10 × 64¾	160 x 25 x 164
63 × 10 × 94½	160 x 25 x 240
Inches (W × D × H)	Cm (L × P × H)



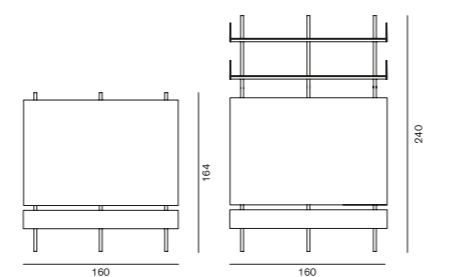
Version with shelves and flap door unit	Versione a ripiani e contenitore a ribalta
31½ × 10 × 64¾	80 x 25 x 164
47¼ × 10 × 64¾	120 x 25 x 164
31½ × 10 × 94½	80 x 25 x 240
47¼ × 10 × 94½	120 x 25 x 240
Inches (W × D × H)	Cm (L × P × H)

Wall shelving system with satin nickel-plated brass vertical supports. Clay stained or black (mod. Layer) open pore lacquered ash shelves. Door or flap door units with hand decorated tempered glass fronts in decò or craquelé finish. Available also with painted glass fronts as per sample in the bright or satin version.

Libreria con montanti verticali in ottone nichelato satinato. Ripiani in frassino tinto creta oppure tinto nero poro aperto (mod. Layer). Contenitori ad anta o ribalta, con frontali in cristallo temperato decorato a mano, nella finitura decò o craquelé. Disponibile anche con frontali in cristallo retroverniciato nei colori del campionario, nella versione brillante o satinata.



Version with shelves and door unit	Versione a ripiani e contenitore ad anta
23¼ × 10 × 64¾	60 x 25 x 164
23¼ × 10 × 94½	60 x 25 x 240
Inches (W × D × H)	Cm (L × P × H)



Version with shelves, flap door units and Tv panel	Versione a ripiani, contenitori a ribalta e pannello tv
63 × 14 × 64¾	160 x 35 x 164
63 × 14 × 94½	160 x 35 x 240
Inches (W × D × H)	Cm (L × P × H)

Shelving system with champagne or black anodised aluminium structure. Set of vertical lacquered supports in the colours grey, mustard, red or pink, on request. 10mm extralight transparent tempered glass shelves. Available also smoked Grigio Italia glass. Satin brass shelf supports, on request.

31½ × 15 × 26
31½ × 15 × 44½
31½ × 15 × 57
31½ × 15 × 75½
39½ × 15 × 26
39½ × 15 × 44½
39½ × 15 × 57
39½ × 15 × 75½
Inches (W × D × H)

Shelves
31½ × 13½
39½ × 13½
Inches (W × H)

Libreria a spalla portante in cristallo trasparente extralight 12mm temperato, disponibile anche in cristallo Grigio Italia. Ripiani in ottone satinato oppure in ottone satinato argentato. Borchie tornite e godogronate in ottone lucido.

80 x 37,5 x 65,5
80 x 37,5 x 112,5
80 x 37,5 x 144,5
80 x 37,5 x 191,5
100 x 37,5 x 65,5
100 x 37,5 x 112,5
100 x 37,5 x 144,5
100 x 37,5 x 191,5
Cm (L × P × H)

Ripiani
80 x 34
100 x 34
Cm (L × H)

Drizzle

Luca Nichetto
2012

pp. 82, 83, 150, 151



Wooden boiserie covered by extralight mirror or smoked Grigio Italia mirror or painted glass as per samples in the bright or satin version. Available also in natural ash, tobacco stained, wengé stained or hand burnished brass (only for the version cm 90/120 x 16/33h). 8mm extralight transparent or smoked Grigio Italia glass shelves. Bright aluminium frame.

Boiserie in legno rivestito in cristallo specchiato extralight o specchio Grigio Italia oppure retroverniciato nei colori del campionario nella versione brillante o satinata. Disponibile anche in frassino naturale, tinto tabacco, tinto wengé o ottone brunito a mano (solo nella versione cm 90/120 x 16/33h). Mensole in cristallo trasparente extralight o Grigio Italia 8mm. Profili in alluminio brill.

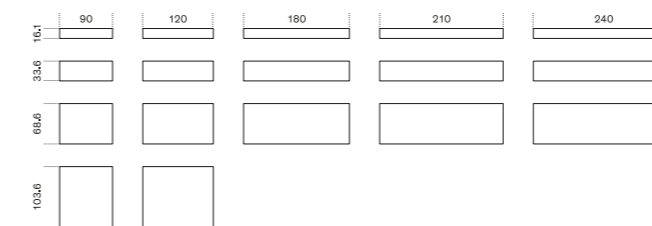
Elle Plus 10

Studio G&R
2010

pp. 79, 80, 81, 84



Back
Schienale



Glass shelves
Mensole in cristallo



Isola

pp. 22, 23

Massimo Castagna
2016

24¼ × 10 × 72¼
47¼ × 10 × 72¼
Inches (W × D × H)

Shelving system with supporting sides in 12 mm extralight transparent tempered glass. Available also in smoked Grigio Italia glass. Satin or satin silverplated brass shelves. Bright brass turned and knurling knobs.

61 x 25 x 183
120 x 25 x 183
Cm (L × P × H)

Libreria a spalla portante in cristallo trasparente extralight 12mm temperato, disponibile anche in cristallo Grigio Italia. Ripiani in ottone satinato oppure in ottone satinato argentato. Borchie tornite e godogronate in ottone lucido.



Navigli

pp. 41, 42, 43

Massimo Castagna
2015

A 27¾ × 9½ × 47¼
B 27¾ × 9½ × 47¼
Inches (W × D × H)

Wall shelving system with hand burnished copper structure and shelves. The hand burnished copper finish looks naturally spotted and irregular. Due to this craftmade processing, each product is unique and exclusive.

A 70 x 24 x 120
B 70 x 24 x 120
Cm (L × P × H)

Libreria a muro, con struttura e mensole in rame brunito a mano. Il rame risulta naturalmente macchiato e disomogeneo. Questa lavorazione artigianale conferisce ad ogni pezzo una particolare unicità, rendendolo esclusivo.



Tortona

pp. 67, 68, 69, 71, 76,
93, 120, 122, 144, 145

Massimo Castagna
2014

65½ × 14¾ × 25¾
94¼ × 14¾ × 25¾
65½ × 14¾ × 36¼
94¼ × 14¾ × 36¼
65½ × 14¾ × 69
94¼ × 14¾ × 69
65½ × 14¾ × 101¾
94¼ × 14¾ × 101¾
Inches (W × D × H)

Shelving system in patinated bronze lacquered metal. 8mm bronze stopsol or extralight transparent tempered glass shelves. Available also with top in Calacatta Vagli Oro marble (only for the versions 65h cm and 92h cm, on request).

166 x 37 x 65
239 x 37 x 65
166 x 37 x 92
239 x 37 x 92
166 x 37 x 175
239 x 37 x 175
166 x 37 x 258
239 x 37 x 258
Cm (L × P × H)

Libreria in metallo verniciato bronzo patinato. Piani in cristallo 8mm stopsol bronzo o trasparente extralight temperato. Su richiesta disponibile top in marmo Calacatta Vagli Oro (solo per le versioni cm 65h e cm 92h).



Paperweight in solid brass.

4¾ × 1/2
Inches (Ø × H)

PW.01 paperweight circle
PW.02 paperweight line
PW.03 paperweight triangle

Fermacarte in ottone massiccio.

12 × 1
Cm (Ø × H)

PW.01 fermacarte cerchio
PW.02 fermacarte linea
PW.03 fermacarte triangolo

Paperweight *Studio G&R*
2014

pp. 102, 103



Desk card holder in solid brass.

3 × 1¾
Inches (Ø × H)

Portabiglietti da visita in ottone massiccio.

7 × 4
Cm (Ø × H)

Desk Card Holder *Studio G&R*
2014

pp. 64



Candle Holders

pp. 32

Studio G&R
2014

1¼ - 1¾ x 8
Inches (Ø x H)

Candle Holders in solid brass. Set of two.

3-4 x 20
Cm (Ø x H)

Portacandele in ottone massiccio. Set di due pezzi.



Tray in antiqued mirror or decorated glass.
Brassed metal support.

19¾ x 10½ x 1¾
Inches (W x D x H)

OT.02.A1 Antique 1 mirror
OT.02.A2 antique 2 mirror
OT.02.D Decò glass

Vassoio in specchio anticato o in cristallo decorato a mano. Supporto in metallo ottonato.

50 x 26,5 x 4
Cm (L x P x H)

OT.02.A1 Specchio Antique 1
OT.02.A2 Specchio Antique 2
OT.02.D Cristallo Decò

Odette Tray Rectangular

pp. 33

Studio G&R
2014



Candle Holders Hexagonal

pp. 21, 33

Studio G&R
2014

2 x 1¼
2 x 1¾
2 x 2½
Inches (Ø x H)

Candle Holders hexagonal in solid brass.
Set of three.

5 x 3
5 x 4
5 x 6
Cm (Ø x H)

Portacandele esagonali in ottone massiccio. Set di tre pezzi.



Tray in satinated brass and antiqued mirror or decorated glass. Available also in satinated silver-plated brass.

10¼ x 14 x 2½
Inches (W x D x H)

FT.01.A1 Antique 1 mirror and brass
FT.02.A1 Antique 1 mirror and silver-plated brass
FT.01.A2 Antique 2 mirror and brass
FT.02.A2 Antique 2 mirror and silver-plated brass

Vassoio in ottone satinato e specchio anticato o cristallo decorato a mano. Disponibile anche in ottone argentato e satinato.

26 x 35,5 x 6
Cm (L x P x H)

FT.01.A1 Specchio Antique 1 e ottone
FT.02.A1 Specchio Antique 1 e ottone argentato
FT.01.A2 Specchio Antique 2 e ottone
FT.02.A2 Specchio Antique 2 e ottone argentato

Folded Tray

pp. 93

Studio G&R
2014



Odette Tray Oval

pp. 18, 19, 145, 146, 149

Studio G&R
2014

15¼ x 12 x 1¾
Inches (W x D x H)

Tray in antiqued mirror or decorated glass.
Brassed metal support.

OT.01.A1 Antique 1 mirror
OT.01.A2 antique 2 mirror
OT.01.D Decò glass

38,5 x 30 x 4
Cm (L x P x H)

Vassoio in specchio anticato o in cristallo decorato a mano. Supporto in metallo ottonato.

OT.01.A1 Specchio Antique 1
OT.01.A2 Specchio Antique 2
OT.01.D Cristallo Decò

Table game in Black Marquinia marble and solid brass. Pawns in bright and satin brass.

11¼ x 11¼ x 1¾
Inches (W x D x H)

Gioco da tavolo in marmo Nero Marquinia e ottone. Pedine in ottone lucido e satinato.

28 x 28 x 4
Cm (L x P x H)

Tip Tap Toe

pp. 38

Silvia Gallotti
2017



Tic Tac 14

pp. 29

Studio G&R
2014



19 3/4 x 8 x 69
Inches (Ø x D x H)

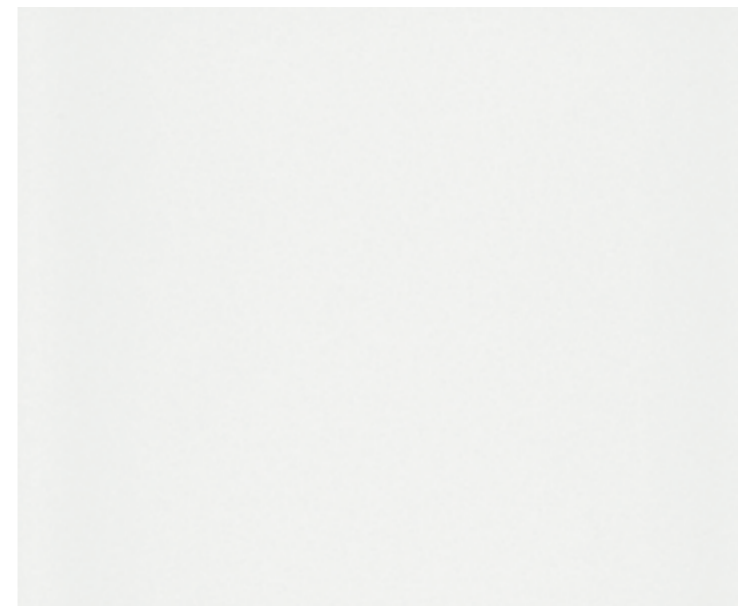
Manual winding pendulum clock. Tobacco stained ash structure and 6mm extralight transparent tempered bevelled front glass. Supermirror bright stainless steel back. Black anodised aluminium and chromed brass mechanism. Striking mechanism clock. Customized engraving, on request.

50 x 20 x 175
Cm (Ø x P x H)

Orologio a pendolo con caricamento manuale. Struttura in frassino tinto tabacco e frontale in cristallo trasparente extralight 6mm temperato e bisellato. Fondo in acciaio inox lucido Supermirror. Meccanismo in alluminio anodizzato nero e ottone cromato. Orologio con funzione a batteria. Su richiesta, incisione personalizzata.

Finishes

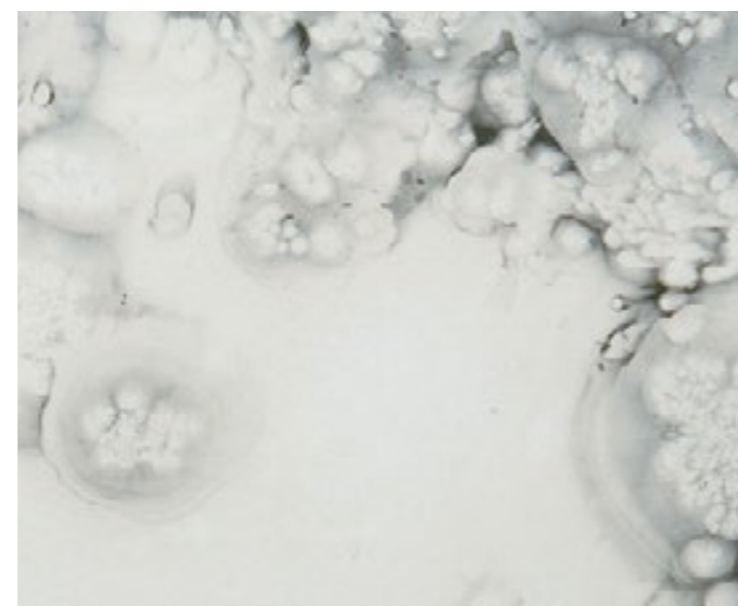
211	Glass
214	Woods
216	Metals
218	Marbles
220	Textiles



Extralight mirror
Specchio extralight



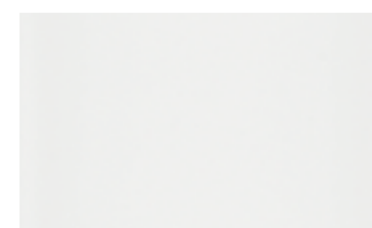
Antique 1 mirror
Specchio Antique 1



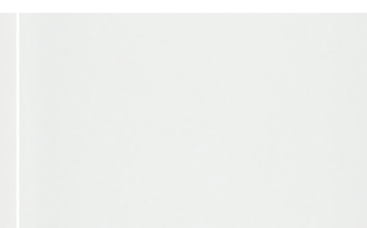
Antique 2 mirror
Specchio Antique 2



Stopsol bronze
Stopsol bronzo



Bright white
Bianco brillante



Satin white
Bianco satinato



Bright cement
Cemento brillante



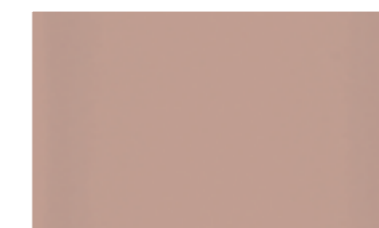
Satin cement
Cemento satinato



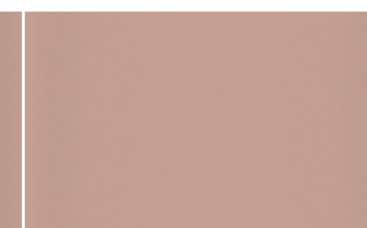
Bright champagne
Champagne brillante



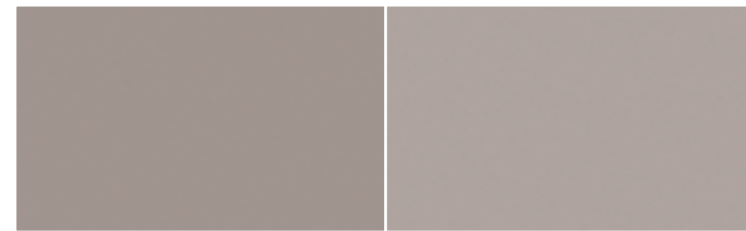
Satin champagne
Champagne satinato



Bright rose power
Cipria brillante

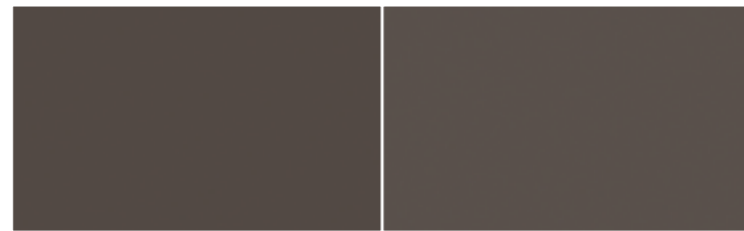


Satin rose power
Cipria satinato



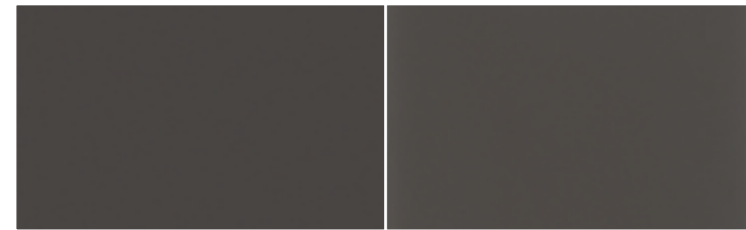
Bright mink
Visone brillante

Satin mink
Visone satinato



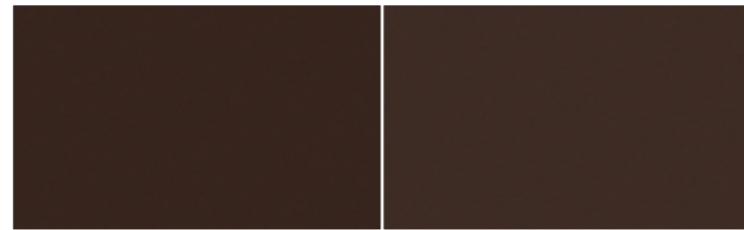
Bright taupe
Grigio beige brillante

Satin taupe
Grigio beige satinato



Bright dark grey
Grigio umbro brillante

Satin dark grey
Grigio umbro satinato



Bright liquorice
Liquirizia brillante

Satin liquorice
Liquirizia satinato



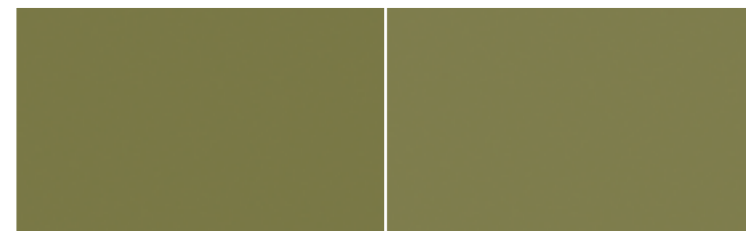
Bright blue-grey
Blu-grigio brillante

Satin blue-grey
Blu-grigio satinato



Bright cadet blue
Cadet blu brillante

Satin cadet blue
Cadet blu satinato



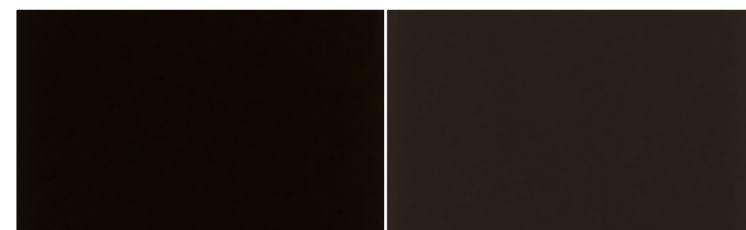
Bright olive
Oliva brillante

Satin olive
Oliva satinato



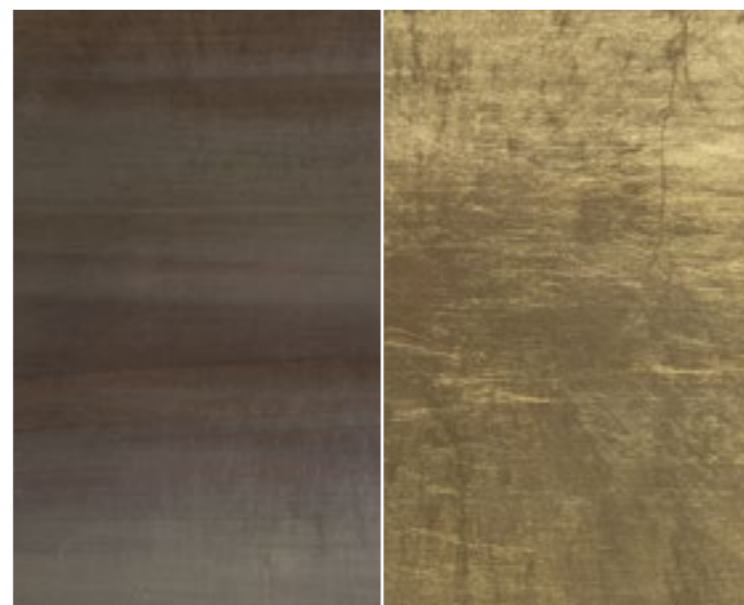
Bright green-grey
Verde-grigio brillante

Satin green-grey
Verde-grigio satinato



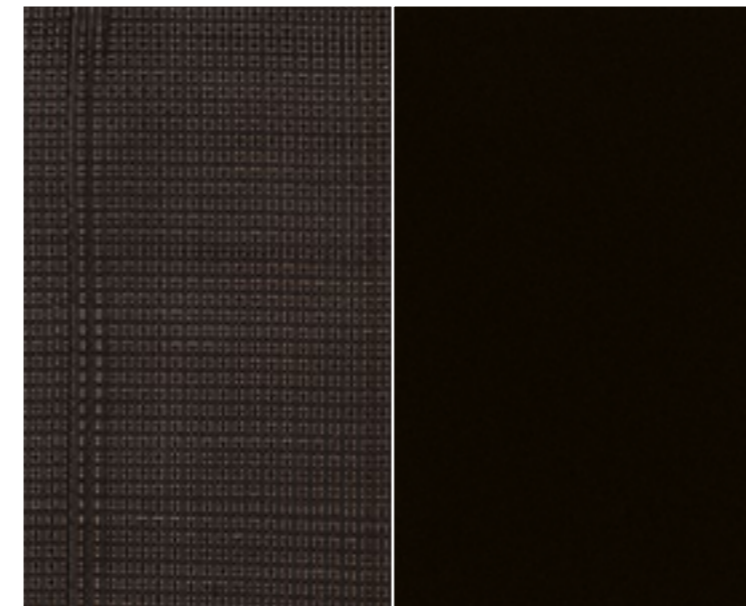
Bright black
Nero brillante

Satin black
Nero satinato



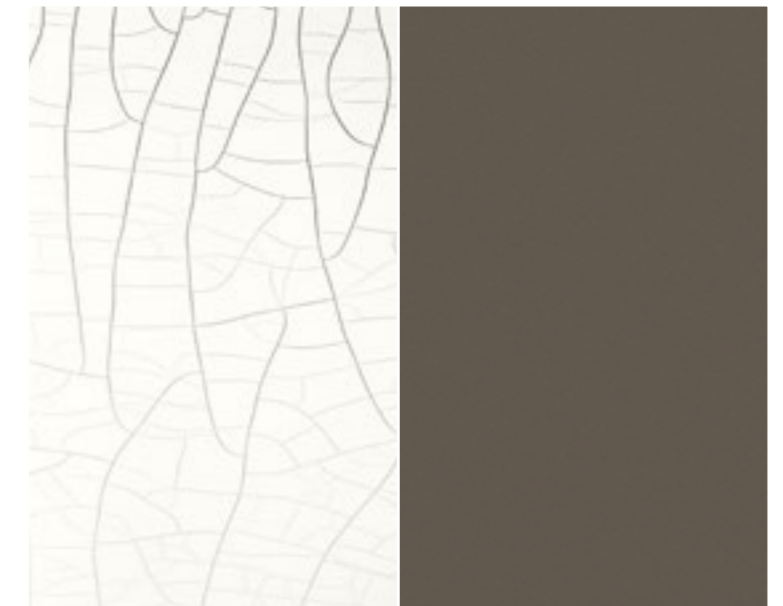
Pandora glass outside
Cristallo Pandora esterno

Pandora glass inside
Cristallo Pandora interno



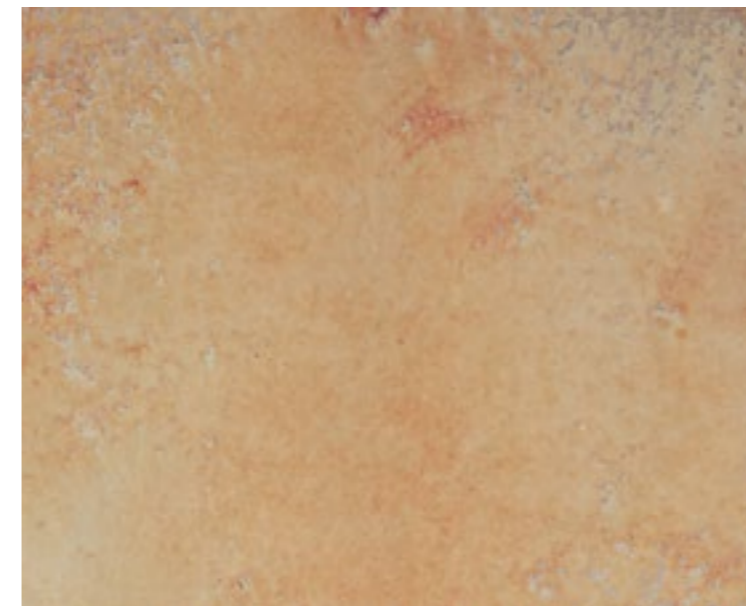
Decò glass outside
Cristallo Déco esterno

Decò glass inside
Cristallo Déco interno



Craquelé glass outside
Cristallo Craquelé esterno

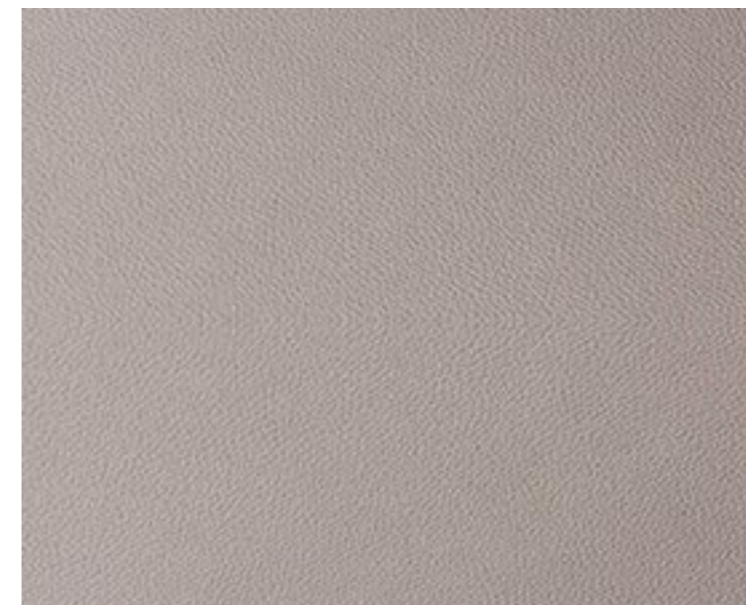
Craquelé glass inside
Cristallo Craquelé interno



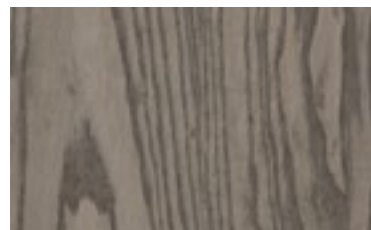
Hand antiqued mirror
Vetro anticato a mano



Misty Venice



Leather effect laminated
Laminato effetto pelle



Clay stained ash
Frassino tinto creta



Natural ash
Frassino naturale



Brushed oak
Rovere spazzolato



Whitened oak
Rovere sbiancato



Wengé stained
Tinto wengè



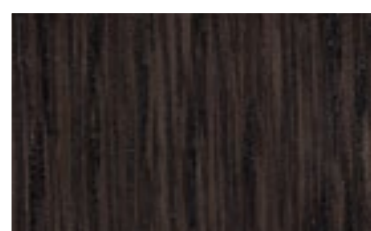
White open pore
Bianco poro aperto



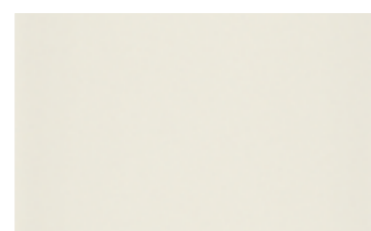
Black open pore (Layer)
Nero poro aperto (Layer)



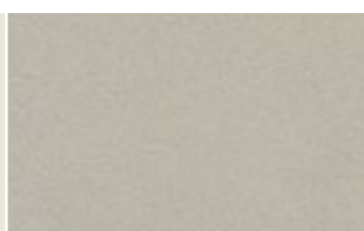
Dark grey closed pore
Grigio umbro poro chiuso



Tobacco stained
Tinto tabacco



Canapa fabric touch effect
Canapa effetto tessuto



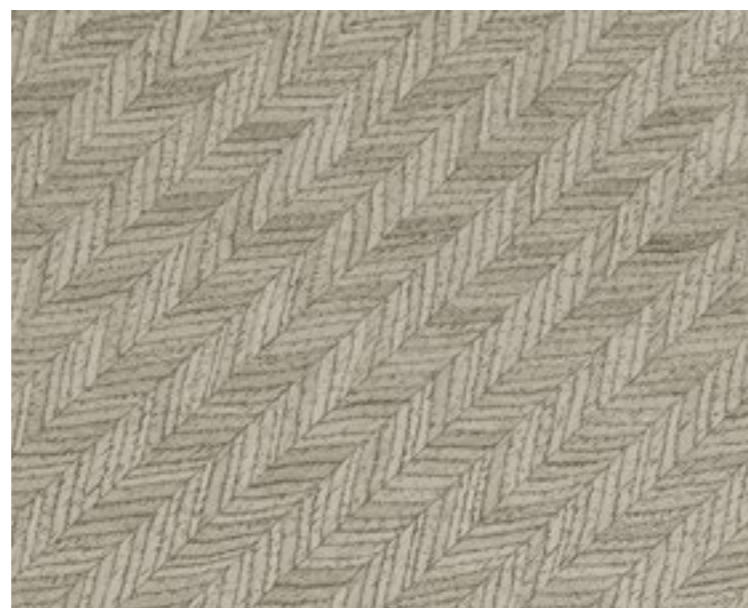
Sand fabric touch effect
Sabbia effetto tessuto



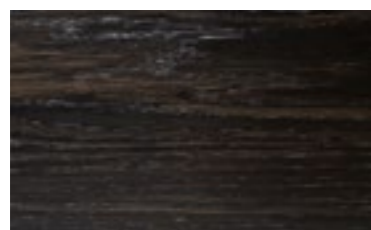
Chestnut fabric touch effect
Castagna effetto tessuto



Maple Frisé dark grey
Acerò frisé grigio



Tweed



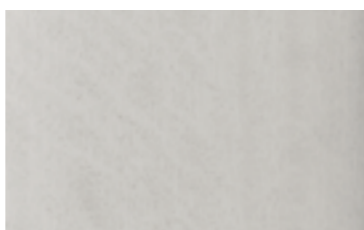
Fossil Oak
Rovere fossile



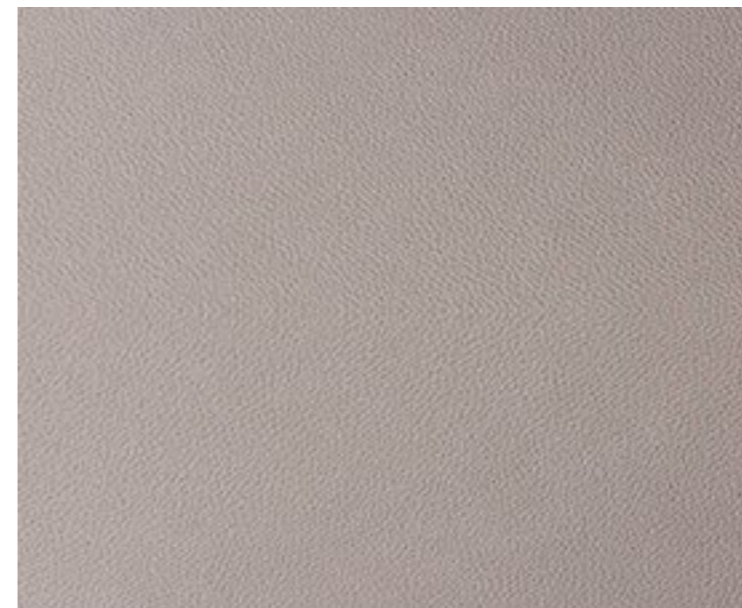
Rosewood
Palissandro



Tanganika black
Tanganica nero



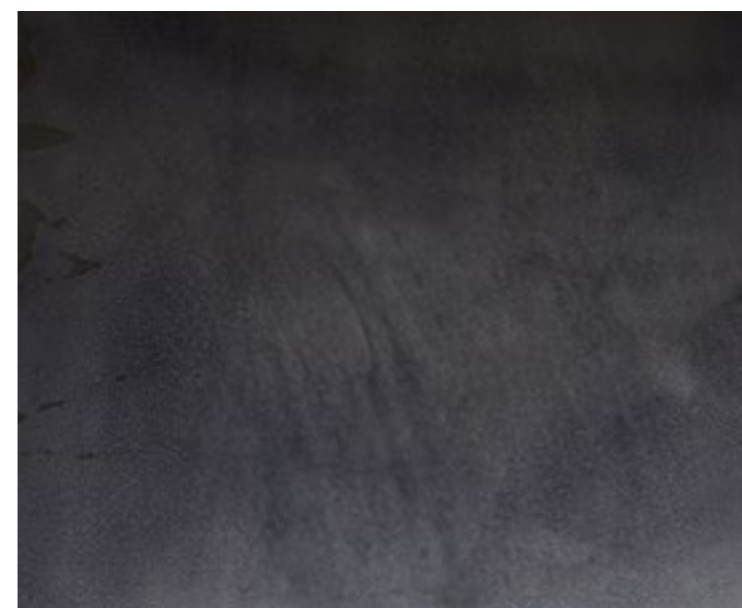
Taba Frisé white
Taba Frisé bianco



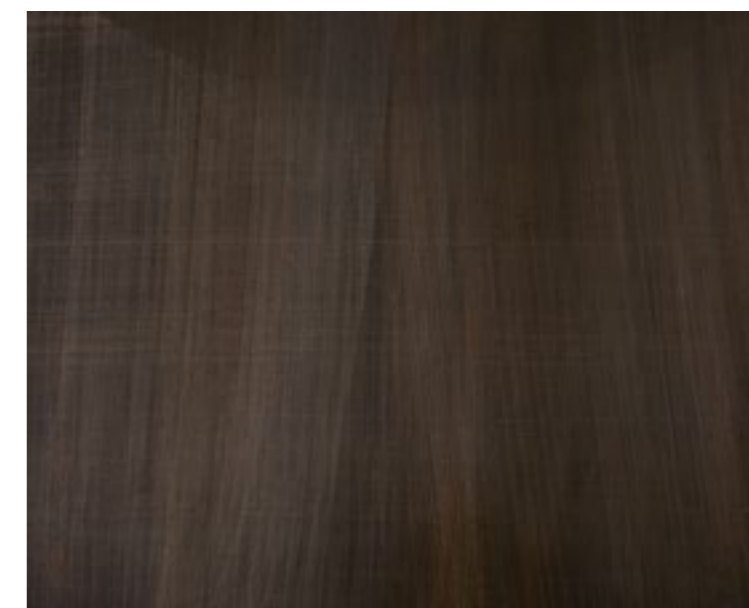
Leather effect laminated
Legno laminato effetto pelle



Rust
Ruggine



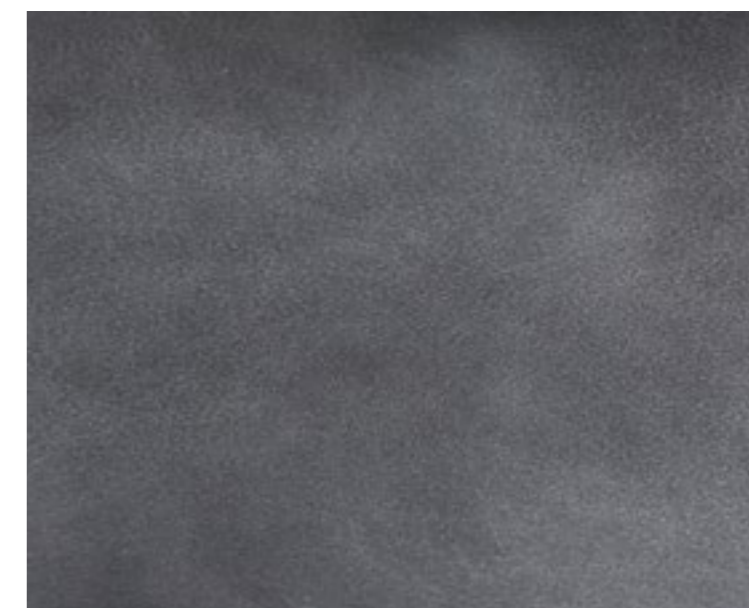
Carbon Black



Autumn Weave



Gold leaf
Foglia oro



Antique bronze
Bronzo anticato



Bright stainless steel
Acciaio inox lucido

Satin stainless steel
Acciaio inox satinato

Anodised aluminium
Alluminio anodizzato

Chrome
Cromo



Black chrome
Cromo nero

Bright brass
Ottone lucido

Satin brass
Ottone satinato

Satin brass lacquered
Laccato ottone satinato



Hand burnished brass
Ottone brunito a mano



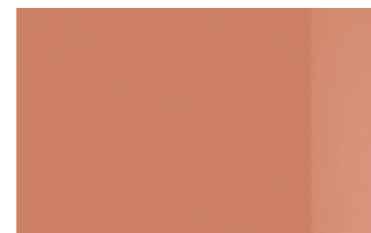
Satin nickel-plated brass
Ottone nichelato satinato



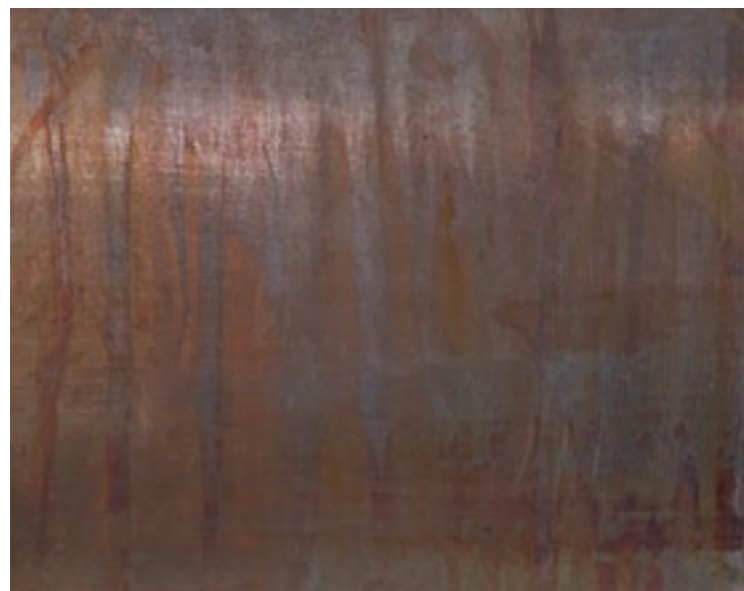
Brassed metal
Metallo ottonato



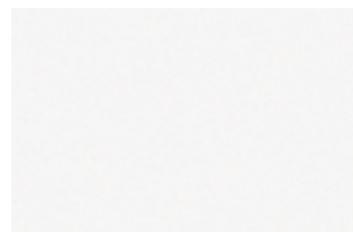
Satin silver-plated brass
Ottone satinato argentato



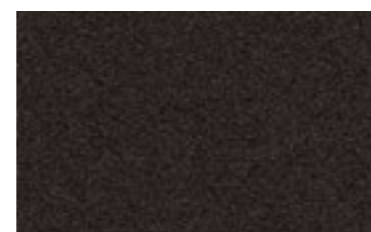
Coppered brass
Ottone ramato



Hand burnished copper
Rame brunito a mano



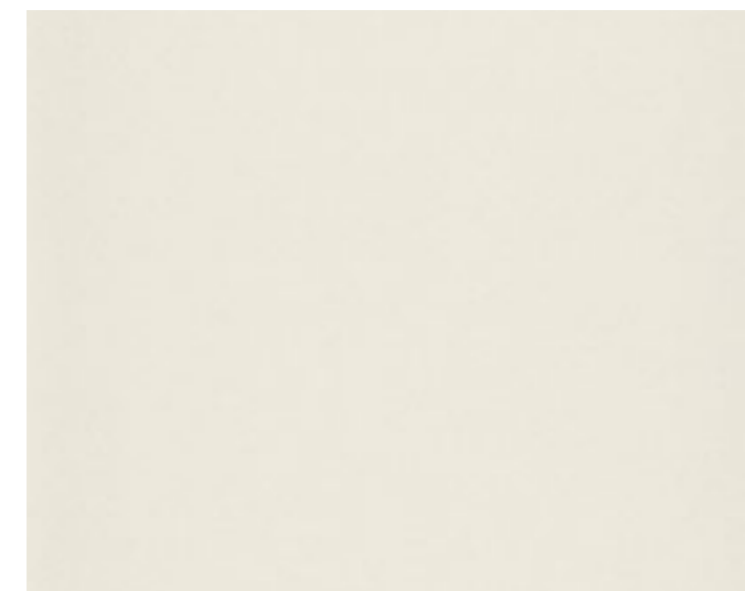
Embossed white
Bianco gofrato



Embossed black
Nero gofrato



Patinated bronze
Bronzo patinato



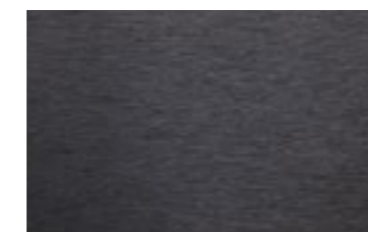
Canapa fabric touch effect
Canapa effetto tessuto



Sand fabric touch effect
Sabbia effetto tessuto



Chestnut fabric touch effect
Castagna effetto tessuto



Black brushed aluminium
Alluminio spazzolato nero



Titanium grey brushed aluminium
Alluminio spazzolato titanio



Burnished metal
Metallo brunito



Bronzed black
Nero bronzato



Statuary White
Bianco Statuario



Calacatta Vagli Oro



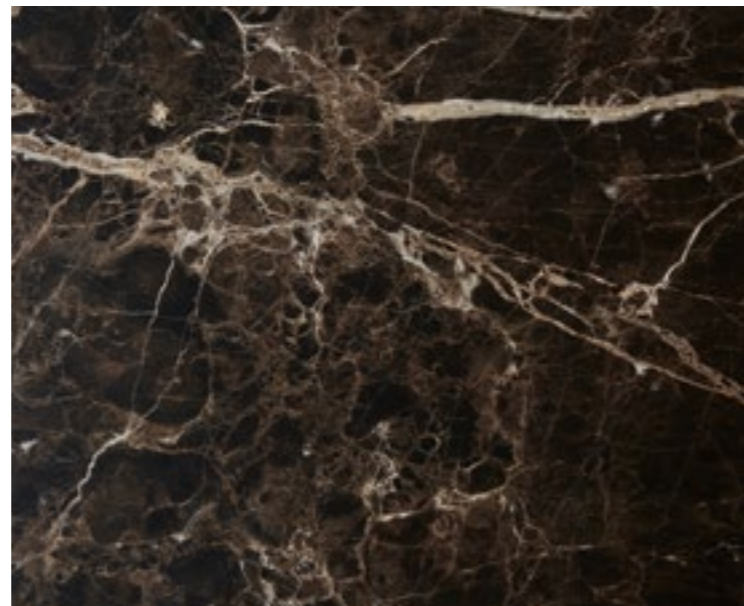
Black Marquina
Nero Marquina



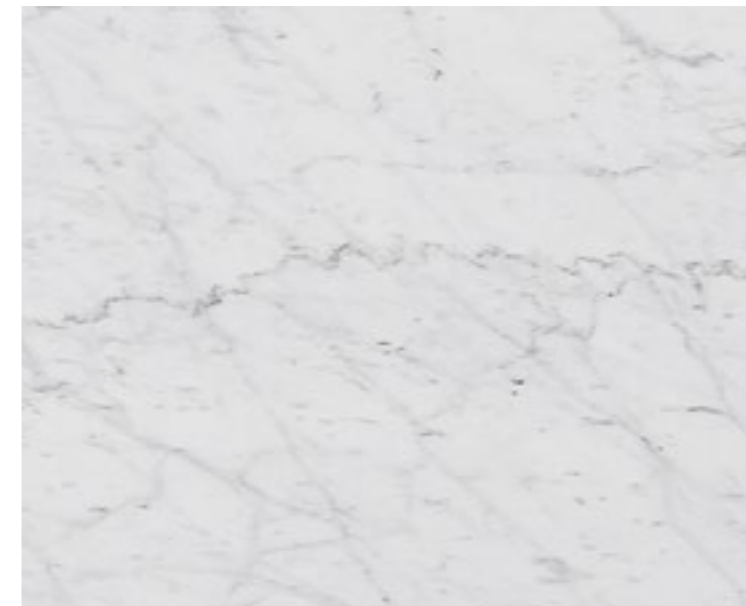
Sahara Noir



Stardust Grey
Grigio Stardust



Brushed Emperor Brown
Emperador Brown spazzolato



Carrara White
Bianco Carrara



Nabuk ice 2100



Avassi milk 014



Gioiello milk 013



Leather milk 195



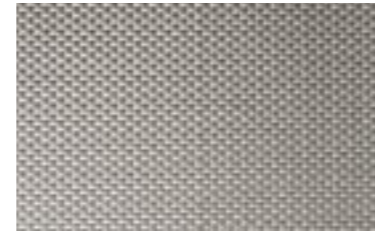
Sofi milk 187



Sofi canapa 100



Nabuk cement 2115



Corbezzolo cement 500



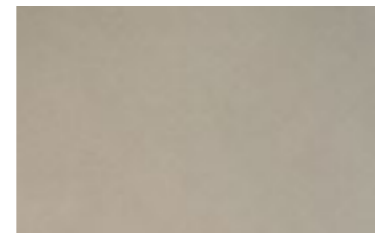
Leather canapa 199



Gioiello sand 029



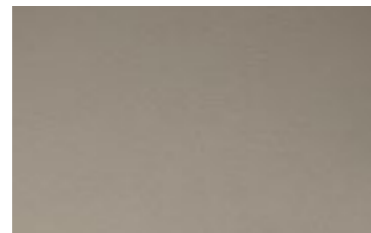
Damié sand 031



Suede sand 006



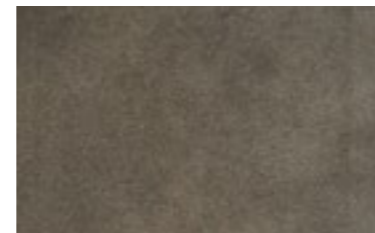
Perseo clay 022



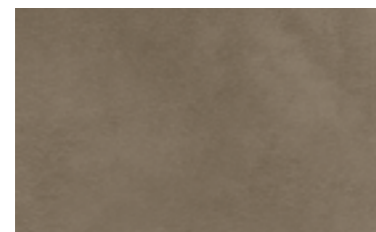
Leather clay 207



Pixel cement 001



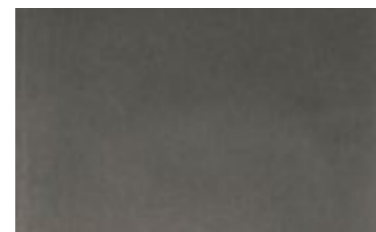
Suede sand 012



Nabuk sand 2133



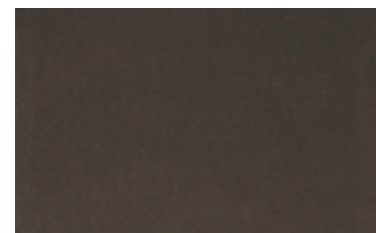
Reggio mink 010



Velvet mink 518



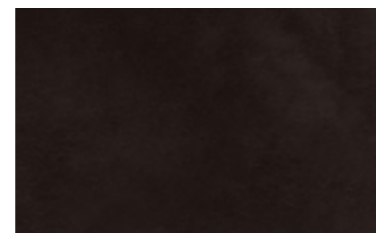
Gioiello taupe 031



Velvet taupe 537



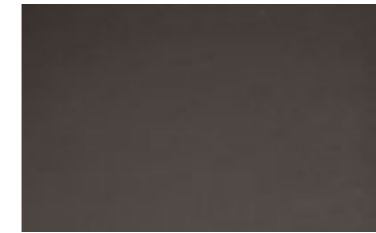
Reggio taupe 070



Nabuk liquorice 2114



Damié liquorice 011



Leather liquorice 147



Perseo black 001



Gioiello dark grey 028



Velvet black 800



Avassi liquorice 033



Nabuk black 2138



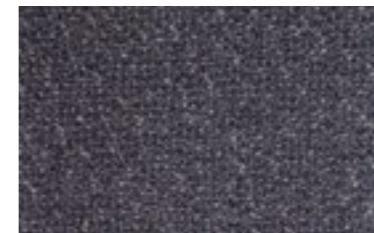
Leather black 101



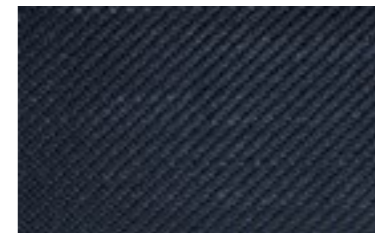
Suede grey 074



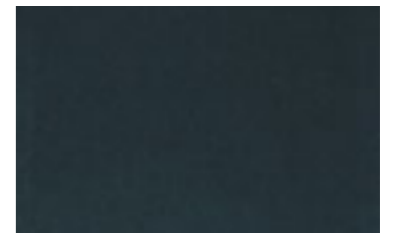
Damié grey 082



Sofi grey 062



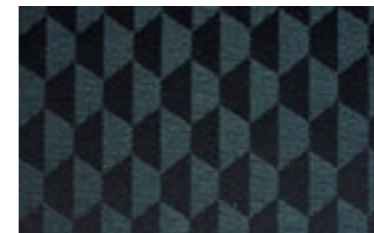
Gioiello blue grey 010



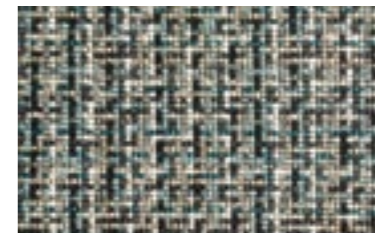
Velvet blue 408



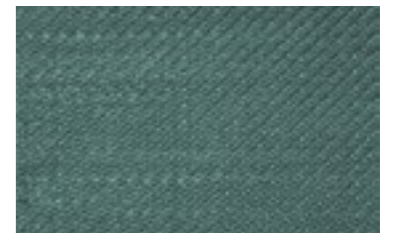
Nabuk blue 2117



Avassi blue 039



Pixel peacock 003



Gioiello peacock 041



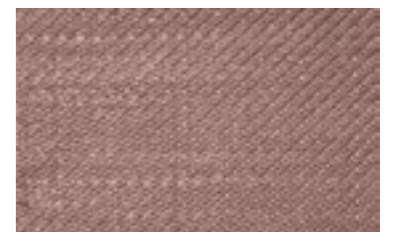
Velvet peacock 705



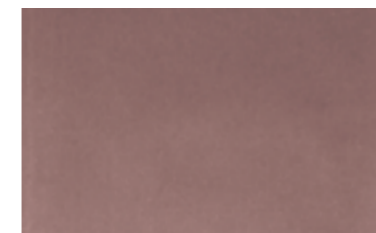
Suede grey 058



Velvet sage green 6381



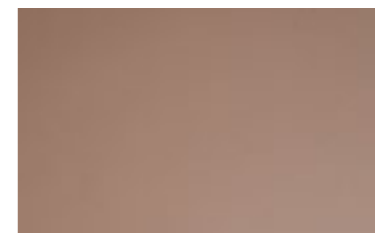
Gioiello violet 030



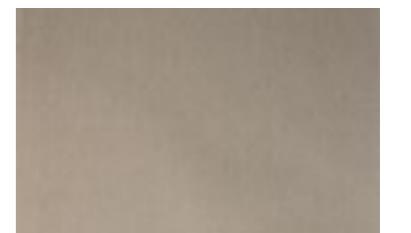
Velvet rose powder 4512



Nabuk rose powder 2104



Leather rose powder 239



Velvet pearl 206



Damié rose powder 111



Velvet ash pink 2703



Suede grey 020



Mesh ochre 006



Velvet ochre 1688



Gioiello ochre 032

Credits

Graphic design
Ideabile

Photography
Matteo Imbriani

Styling
Studiopepe
Studio G&R
Studio Ossino

Photoengraving
Monogramma

Printing
Grafiche Boffi

Thanks to
Agglotech
Atipico
Aytm
Kriistina
Monograph
Bon
G.T. Design
Mani

© 2018 Gallotti&Radice

Gallotti&Radice srl
via Matteotti, 17
22072 Cermenate
Como, Italy
T +39 031 777111
F +39 031 777188
info@gallottiradice.it
www.gallottiradice.it

